
DERWENT WORLD PATENTS INDEX® (DWPISM)

Tools of the Trade on Dialog

Copyright © 2007 The Thomson Corporation

Edition 3

ISBN: 978 1 905935 05 5

Copyright © 2007 The Thomson Corporation

Visit the Thomson Scientific web site at www.scientific.thomson.com

Second edition published May 2000

Third edition published November 2006

ISBN: 0 901157 68 6 Second edition

ISBN: 978 1 905935 05 5 (Third edition)

All rights reserved. No part of this publication may be reproduced, stored in a retrieval system or transmitted in any form or by any means – electronic, mechanical, recording, photocopying or otherwise – without express written permission from the copyright owner.

Contents

Introduction	1
Who is Thomson Scientific?	1
What is <i>DWPI</i> ?	1
Why do I want to use <i>DWPI</i> ?	1
Sounds interesting, how do I get started?	1
How to Read a <i>DWPI</i> Record	2
Dialog Basic Searching Techniques	9
Basic Dialog Commands	9
Truncation	9
Combining Search Terms	10
Proximity Operators	10
Displaying <i>DWPI</i> Information	11
Examples using the TYPE command:	12
Sample Search	13
Patent/Publication Number Searching	14
Japanese Publication Number Searching	16
Application/Priority Number Searching	19
Complete Patent Family Searching	22
Inventor Searching	26
Assignee/Company Searching	28
Using Date Ranging, <i>DWPI</i> Country Information and <i>DWPI</i> Updates/Year(s)	30
Searching for Dates	30
Searching for Country Information	31
Searching <i>DWPI</i> Update/Year	31
Using <i>DWPI</i> Update Codes and Accession Numbers	32
<i>DWPI</i> Update Codes	32
Searching <i>DWPI</i> Accession Number(s)	32
Subject/Keyword Searching	33
<i>DWPI</i> Basic Index	34
<i>DWPI</i> Value-Add Abstracts	35
British/American Spellings and Terminology	36
Using the Thomson Scientific <i>DWPI</i> Classification System	37

Using the International Patent Classification System	41
Suggested methods for finding the right IPCs for your search	44
Using Thomson Scientific's Manual Codes	45
Competitive Intelligence: Early Warning	49
Creating a Current Awareness /Dialog Alert	52
DWPI Country Coverage and Kind Codes	54
DWPI Country Coverage Date of Inclusion	60
Thomson Scientific Standard Abbreviations	62
Glossary of Patent Terminology	64
Further Information	66
Customer Technical Support	66
Contact Details	66
Thomson Scientific Website	67
Customer Support Center	67
Customer Training	67
Patent Copy Service	68
User Guides	68
Useful Additional Websites	69
Did you know that you can now access <i>DWPI</i> via the internet?	69
Other Thomson Scientific databases available on Dialog	69

Introduction

Thank you for your interest in the *Derwent World Patents Index (DWPI)* database. In order to familiarize you with *DWPI*, here are the answers to some of the most common questions you might have.

Who is Thomson Scientific?

Part of the Thomson Corporation, Thomson Scientific is the world's leading provider of global patent information to businesses and research institutions. For nearly half a century, Thomson Scientific has compiled, translated and abstracted patent information from over 40 patent-issuing authorities. Our products provide you with a comprehensive picture of global technology to keep your organization ahead in the innovation race.

What is *DWPI*?

DWPI is the world's most comprehensive database of international patent information. Every week, approximately 20,000 patent documents from over 41 patent-issuing authorities are reviewed and value-enhanced by our patent experts. Our experienced staff read each document in its native language, then rewrite the titles and abstracts in English to create a *DWPI* record. Included in the record is the drawing from the patent that is most representative of its claims and special indexing to help you search for key patent information.

Why do I want to use *DWPI*?

- to determine the extent to which an invention has been protected internationally
- to search for English language equivalents in order to review patent documents published in an unfamiliar language
- to research technological advances within your field
- to find potential gaps in the marketplace
- to review the novelty of your company's invention
- to track technological trends within your field
- to avoid/watch for patent infringement
- to identify competitors and monitor their activities

Sounds interesting, how do I get started?

Log into Dialog and access the *DWPI* database. If you do not have a Dialog login ID or need additional assistance, please contact our friendly and knowledgeable Thomson Scientific Customer Support staff. Turn to page 66-67 of this guide for contact details of your nearest Thomson Scientific office.

How to Read a *DWPI* Record

Geographic Coverage:	41 Patent-issuing authorities and 2 literature sources
Historical Coverage:	Pharmaceuticals from 1963 Agriculture and Veterinary Medicine from 1965 Plastics and Polymers from 1966 All Chemistry from 1970 All Technology from 1974
Available Patent Drawings:	Engineering and Electrical documents 1988 to present Chemical documents 1992 to present
DIALOG Host Information:	File 351 File 352 (Japan) File 350 (subscriber only*)
Database Update Frequency:	Every 3-4 days

*You must have a valid subscription with Thomson Scientific to access the subscriber versions of the *DWPI* database. For more information please contact your local Thomson Scientific Support Center.

Records until 1999 (for records from 1999 onwards, please see pages 5-6).

Derwent WPI
(c) 2006 The Thomson Corporation. All rights reserved.

Displaying DWPI Information
see page 11

Accession Number
see page 32

0009174236
WPI Acc no: **1999-097448**/199909
XRPX Acc No: N1999-070925

DWPI Title
see page 33

Golf club, especially driver - has titanium head, plastic neck, and graphite shaft
Patent Assignee: KARSTEN MFG CORP (KARS-N)
Inventor: KUBICA D J; NOBLE R B

Patent Assignee(s)
see page 28

Patent Family (8 patents, 6 countries)

Patent Number	Kind	Date	Application Number	Kind	Date	Update	Type
DE 29821129	U1	19990121	DE 29821129	U	19981125	199909	B
ZA 199810294	A	19990331	ZA 199810294	A	19981111	199918	E
GB 2331939	A	19990609	GB 199824977	A	19981113	199925	E
FR 2771936	A1	19990611	FR 199814903	A	19981126	199930	E
JP 11221302	A	19990817	JP 1998343098	A	19981202	199943	E
CA 2254184	A1	19990604	CA 2254184	A	19981117	199947	E
GB 2331939	B	20020227	GB 199824977	A	19981113	200215	E
CA 2254184	C	20020625	CA 2254184	A	19981117	200252	E

Inventor(s)
see page 26

DWPI Update
see page 30

Priority Applications (no., kind, date): US 1997985008 A 19971204

Priority Data
see page 19

Patent Number
DE 29821129
ZA 199810294
JP 11221302
CA 2254184
CA 2254184

Patent Details

Kind	Lan	Pgs	Draw	Filing Notes
U1	DE	15	9	
A	EN	15		
A	JA	6		
A1	EN			
C	EN			

Application Data
see page 19

DWPI Country Kind Code
see page 54

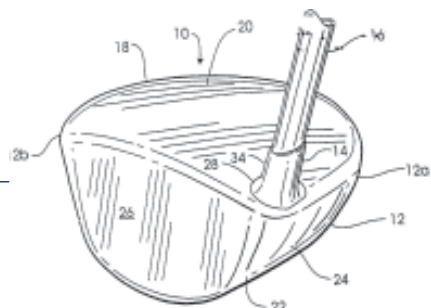
DWPI value-added abstract
see page 34

Alerting Abstract DE U1

The club head (12) comprises a first material with high elasticity torsion modulus. It has a hollow body (18) with a hitting face (26), a heel end (12a) and a toe end (12b). The head also has a bore (28) in the heel end behind the end face (26) of the body. The bore has an open top end and a closed lower end. The top end is aligned with the top wall (20) of the body. The neck (14) comprises a second material with low elasticity torsion modulus. It has a lower part fitted into the bore, and an upper part (34) extending away from the top body wall. The neck also has a continuous long passage, and a shaft (16) is fitted into the passage with a pointed end. The head is of titanium, the neck is of plastic, and the shaft is of graphite. **ADVANTAGE** - The neck absorbs vibrations to reduce damage to the shaft.

Main Drawing Sheet(s) or Clipped Structure(s)

Available Drawing(s)
see page 12



Title Terms /Index Terms/Additional Words: GOLF; CLUB; DRIVE; TITANIUM; HEAD; PLASTIC; NECK; GRAPHITE; SHAFT

International Patent Classification
see page 41

Class Codes

IPC	Class Level	International Patent Classification Scope	Position	Status	Version Date
A63B; A63B-053/00; A63B-053/02; A63B-053/04			Main		"Version 7"

File Segment: EngPI; ;
DWPI Class: P36
Original Publication Data by Authority

Canada

Publication No. **CA 2254184 A1 (Update 199947 E)**
Publication Date: 19990604
Assignee: KARSTEN MFG CORP (KARS-N)
Inventor: KUBICA D J
NOBLE R B
Language: EN
Application: CA 2254184 A 19981117 (Local application)
Priority: US 1997985008 A 19971204
Original IPC: A63B-53/04(A)
Current IPC: A63B-53/04(A)

Publication No. **CA 2254184 C (Update 200252 E)**

Publication Date: 20020625
Assignee: KARSTEN MFG CORP (KARS-N)
Inventor: KUBICA D J
NOBLE R B
Language: EN
Application: CA 2254184 A 19981117 (Local application)
Priority: US 1997985008 A 19971204
Original IPC: A63B-53/04(A)
Current IPC: A63B-53/04(A)

Germany

Publication No. DE 29821129 U1 (Update 199909 B)

Publication Date: 19990121

Golfschlaeger mit Titankopf und Kunststoffhosel

Assignee: Karsten Mfg., Corp., Phoenix, Ariz., US (KARS-N)

Agent: Rechtsanwalt und Patentanwalt Dr.-Ing. Dr.jur. Volkmar Tetzner, Patentanwalt Dipl.-Ing. Michael Tetzner, 81479 Muenchen

Language: DE (15 pages, 9 drawings)

Application: DE 29821129 U 19981125 (Local filing Utility Model)

Priority: US 1997985008 A 19971204

Original IPC: A63B-53/00(A) A63B-53/02(B) A63B-53/04(B)

Current IPC: A63B-53/00(A) A63B-53/02(B) A63B-53/04(B)

Claim:

1. Golfschlaeger (10), enthaltend einen Schlaegerkopf (12), der aus einem ersten Material mit hohem Elastizitaets-Torsionsmodulus besteht, wobei der Schlaegerkopf (12) einen hohlen Koerper (18) besitzt mit einer oberen Wand (20), einer unteren Wand (22), einer die obere Wand (20) und die untere Wand (22) verbindende Seitenwand (24) und einer zum Schlagen eines Golfballes angeordneten Stirnwand (26), wobei der Schlaegerkopf (12) ferner ein fersenseitiges Ende (12a) und ein spitzenseitiges Ende (12b) aufweist; wobei ferner der Schlaegerkopf (12) eine in seinem fersenseitigen Ende (12a) hinter der Stirnwand (26) des Koerpers (18) angeordnete Bohrung (28) aufweist, die sich nach unten von der oberen Wand (20) des Koerpers (18) zur unteren Wand (22) des Koerpers (18) erstreckt, wobei die Bohrung (28) ein offenes oberes Ende (28a) und ein geschlossenes unteres Ende (28b) besitzt, wobei weiterhin das obere Ende (28a) der Bohrung (28) im wesentlichen mit der oberen Wand (20) des Koerpers (18) fluchtet und wobei das untere Ende (28b) der Bohrung (28) beabstandet zur unteren Wand (22) des Koerpers (18) angeordnet ist; einen Hosel (14) bestehend aus einem zweiten Material mit niedrigem Elastizitaets-Torsionsmodulus, wobei der Hosel (14) einen in die Bohrung (28) eingefuehrten unteren Abschnitt (36) und einen oberen Abschnitt (34) aufweist, der sich nach oben von der oberen Wand (20) des Koerpers (18) weg erstreckt, wobei der Hosel (14) ferner einen im wesentlichen laenglichen Durchgang (40) besitzt, der sich durch den oberen Abschnitt (34) und den unteren Abschnitt (36) des Hosels (14) hindurch erstreckt; und einen Schaft (16) mit einem im Hoseldurchgang (40) aufgenommenen, spitzenseitigen Ende (17).

FrancePublication No. **FR 2771936 A1 (Update 199930 E)**

Publication Date: 19990611

Assignee: KARSTEN MFG CORP (KARS-N)

Inventor: KUBICA D J

NOBLE R B

Language: FR

Application: FR 199814903 A 19981126 (Local application)

Priority: US 1997985008 A 19971204

Original IPC: A63B-53/04(A)

Current IPC: A63B-53/04(A)

Great BritainPublication No. **GB 2331939 A (Update 199925 E)**

Publication Date: 19990609

Assignee: KARSTEN MFG CORP; US (KARS-N)

Inventor: KUBICA D J

NOBLE R B

Language: EN

Application: GB 199824977 A 19981113 (Local application)

Priority: US 1997985008 A 19971204

Original IPC: A63B-53/02(A)

Current IPC: A63B-53/02(A)

Publication No. **GB 2331939 B (Update 200215 E)**

Publication Date: 20020227

Assignee: KARSTEN MFG CORP; US (KARS-N)

Inventor: KUBICA D J

NOBLE R B

Language: EN

Application: GB 199824977 A 19981113 (Local application)

Priority: US 1997985008 A 19971204

Original IPC: A63B-53/02(A)

Current IPC: A63B-53/02(A)

Japan

Publication No. **JP 11221302 A (Update 199943 E)**
 Publication Date: 19990817
 GOLF CLUB
 Assignee: KARSTEN MFG CORP (KARS-N)
 Inventor: KUBICA DANIEL J
 NOBLE RANDALL B
 Language: JA (6 pages)
 Application: JP 1998343098 A 19981202 (Local application)
 Priority: US 1997985008 A 19971204
 Original IPC: A63B-53/02(A) A63B-53/04(B)
 Current IPC: A63B-53/02(A) A63B-53/04(B)

South Africa

Publication No. **ZA 199810294 A (Update 199918 E)**
 Publication Date: 19990331
 Assignee: KARSTEN MFG CORP (KARS-N)
 Inventor: KUBICA D J
 NOBLE R B
 Language: EN (15 pages)
 Application: ZA 199810294 A 19981111 (Local application)
 Priority: US 1997985008 A 19971204
 Original IPC: A63B-0/00(A)
 Current IPC: A63B-0/00(A)

DWPI structure for records from 1999 onwards - see page 34

Derwent WPI

(c) 2006 The Thomson Corporation. All rights reserved.

0010480067

WPI Acc no: **2001-080256/200109**

XRAM Acc no: C2001-022985

Additive compositions useful as cold flow improvers in distillate fuels comprises an ethylene vinyl acetate isobutylene terpolymer and combined with maleic anhydride alpha-olefin copolymer, polyimide or alkyl phenol

Patent Assignee: EQUISTAR CHEM LP (EQUI-N)

Inventor: BOTROS M G

Patent Family (5 patents, 91 countries)

Patent Number	Kind	Date	Application Number	Kind	Date	Update	Type
WO 2000069998	A1	20001123	WO 2000US12199	A	20000504	200109	B
AU 200049860	A	20001205	AU 200049860	A	20000504	200113	E
US 6203583	B1	20010320	US 1999311459	A	19990513	200118	E
EP 1194511	A1	20020410	EP 2000932078	A	20000504	200232	E
			WO 2000US12199	A	20000504		
MX 2001011511	A1	20040401	WO 2000US12199	A	20000504	200478	E
			MX 200111511	A	20011112		

Priority Applications (no., kind, date): US 1999311459 A 19990513

Patent Details

Patent Number	Kind	Lan	Pgs	Draw	Filing Notes
WO 2000069998	A1	EN	69	0	
National Designated States,Original	AE AG AL AM AT AU AZ BA BB BG BR BY CA CH CN CR CU CZ DE DK DM DZ EE ES FI GB GD GE GH GM HR HU ID IL IN IS JP KE KG KP KR KZ LC LK LR LS LT LU LV MA MD MG MK MN MW MX NO NZ PL PT RO RU SD SE SG SI SK SL TJ TM TR TT TZ UA UG UZ VN YU ZA ZW				
Regional Designated States,Original	AT BE CH CY DE DK EA ES FI FR GB GH GM GR IE IT KE LS LU MC MW NL OA PT SD SE SL SZ TZ UG ZW				
AU 200049860	A	EN			Based on OPI patent WO 2000069998
EP 1194511	A1	EN			PCT Application WO 2000US12199 Based on OPI patent WO 2000069998
Regional Designated States,Original	AL AT BE CH CY DE DK ES FI FR GB GR IE IT LI LT LU LV MC MK NL PT RO SE SI				

MX 2001011511

A1 ES

PCT Application
WO 2000US12199
Based on OPI patent
WO 2000069998**Alerting Abstract WO A1**

NOVELTY - An additive combination comprises an ethylene vinyl acetate isobutylene terpolymer, and at least one component from maleic anhydride alpha-olefin copolymer, polyimide or an alkyl phenol.

DESCRIPTION - Additive composition comprises an ethylene vinyl acetate isobutylene terpolymer (C1), and at least one maleic anhydride alpha-olefin copolymer (C2) of formula (I), a polyimide component (C3) of formula (II) or an alkyl phenol (C4) of formula (III).

Novelty
see page 35

Detailed Description
see page 35

R= 16-40C hydrocarbon (at least 60 wt. %);
n= 2 - 8;
R= 20-40C hydrocarbon (at least 60 wt. %);
R'= 16-18C hydrocarbon (at least 80 wt. %);
RAP= 20-24C hydrocarbon (at least 90 wt. %) and/or 24-28C hydrocarbon (at least 70 wt. %).

An INDEPENDENT CLAIM is also included for a distillate fuel composition comprising a major proportion of a distillate fuel and the additive component.

USE - As cold flow improvers for distillate fuel compositions such as middle distillate fuel, number 2 diesel fuel or hard-to-treat fuel (claimed).

ADVANTAGE - The additives provide improvement in cold flow properties such as cold filter plugging point and pour point depression of distillate fuels.

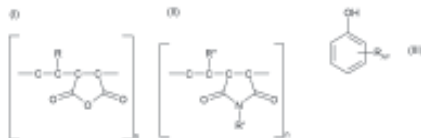
Use
see page 35

Technology Focus

POLYMERS - Preferred Components: (C1) has a weight average molecular weight (Mw) from about 1,500 - 18,000 (preferably 3000 - 12000), number average molecular weight (Mn) from about 400 - 3000 (preferably 1500 - 2500) and vinyl acetate content from about 25 - 55 wt.%. The ratio of Mw to Mn is from 1.5 - 6. The concentration of terpolymer is from about 10 - 1000 parts per million (ppm) by weight of the distillate fuel. (C2) has a number average molecular weight from about 1000 - 5000. (C2) and (C3) are derived from substantially equimolar proportions of maleic anhydride and alpha-olefin. (C3) has a number average molecular weight from 1000 - 8000.

Technology Focus
see page 35

ORGANIC CHEMISTRY - Preferred Composition: The distillate fuel composition additionally contains an ethylene vinyl acetate copolymer component (from about 5 - 250 ppm).

Main Drawing Sheet(s) or Clipped Structure(s)

Title Terms /Index Terms/Additional Words: ADDITIVE; COMPOSITION ; USEFUL; COLD; FLOW; IMPROVE; DISTIL; FUEL; COMPRISE; ETHYLENE; VINYL; ACETATE; ISOBUTYLENE; TERPOLYMER; COMBINATION; MALEIC; ANHYDRIDE; ALPHA; OLEFIN; COPOLYMER; POLYIMIDE; ALKYL; PHENOL

Class Codes

IPC	International Patent Classification			Status	Version Date
	Class Level	Scope	Position		
C10L-001/18			Main		"Version 7"
C10L-001/22			Secondary		"Version 7"

International Patent Classification
see page 41

File Segment: CPI

DWPI Class: A17; A95; E14; H06

Manual Codes (CPI/A-N): A04-F05; A04-G01B; A05-J01A; A07-A02C; A07-A04F; A12-T03B; E10-E02E1; H06-D05

Chemical Indexing

Chemical Fragment Codes (M3):

*01*M905 M904 G011 G012 G013 G100 H4 H401 H441 H8 M220 M224 M225 M226 M231 M232 M233 M240 M281 M320 M414 M510 M520 M531 M540 M781 Q414 R023 0031-33001-K 0031-33001-U

Specific Compound Numbers: R00326; R00966; R00835; R00843; R00326; R00835
Generic (Markush) Compound Numbers: 0031-33001-K; 0031-33001-U; 0031-33001-CL; 0031-33001-USE
Derwent Chemistry Resource Numbers: (Linked) 1013; 7536; 829; 790; 1013; 829

Key Word Indexing

1 0031-33001-USE

Polymer Indexing

(01)

001 018; G0044 G0033 G0022 D01 D02 D12 D10 D51 D53 D58 D82 R00326-R
1013-R; G0055 G0044 G0033 G0022 D01 D02 D12 D10 D51 D53 D58 D84
R00966-R 7536-R; G0566 G0022 D01 D11 D10 D12 D51 D53 D58 D63 D84 F41
F89 R00835-R 829-R; H0033 H0011; P1150
002 018; G0044-R G0033 G0022 D01 D02 D12 D10 D51 D53; G0760 G0022 D01 D23
D22 D31 D42 D51 D53 D59 D65 D75 D84 F39 E00 E01 R00843-R 790-R; H0022
H0011; P1150
003 018; E01 E00 G0044-R G0033 G0022 D01 D02 D12 D10 D51 D53 D58 D93 D94
D95 F72; H0022 H0011; P1150
004 018; G0044 G0033 G0022 D01 D02 D12 D10 D51 D53 D58 D82 R00326-R
1013-R; G0566 G0022 D01 D11 D10 D12 D51 D53 D58 D63 D84 F41 F89
R00835-R 829-R; H0022 H0011; P1150; P1310
005 018; ND01; Q9999 Q7636; Q9999 Q9347; B9999 B3554-R; K9665; B9999
B5094 B4977 B4740; K9745-R

Original Publication Data by Authority

Australia

Publication No. AU 200049860 A (Update 200113 E)
Publication Date: 20001205
Assignee: EQUISTAR CHEM LP; US (EQUI-N)
Language: EN
Application: AU 200049860 A 20000504 (Local application)
Priority: US 1999311459 A 19990513
Related Publication: WO 2000069998 A (Based on OPI patent)
Original IPC: C10L-1/18(A) C10L-1/22(B)
Current IPC: C10L-1/18(A) C10L-1/22(B)

EPO

Publication No. EP 1194511 A1 (Update 200232 E)
Publication Date: 20020410
Language: EN
Application: EP 2000932078 A 20000504 (Local application)
WO 2000US12199 A 20000504 (PCT Application)
Priority: US 1999311459 A 19990513
Related Publication: WO 2000069998 A (Based on OPI patent)
Designated States: (Regional Original) AL AT BE CH CY DE DK ES FI FR GB GR IE IT LI LT LU LV MC MK NL
PT RO SE SI

Mexico

Publication No. MX 2001011511 A1 (Update 200478 E)
Publication Date: 20040401
Assignee: EQUISTAR CHEM LP (EQUI-N)
Inventor: BOTROS M G
Language: ES
Application: WO 2000US12199 A 20000504 (PCT Application)
MX 200111511 A 20011112 (Local application)
Priority: US 1999311459 A 19990513
Related Publication: WO 2000069998 A (Based on OPI patent)

United States

Publication No. US 6203583 B1 (Update 200118 E)
Publication Date: 20010320
Assignee: EQUISTAR CHEM LP; US (EQUI-N)
Inventor: BOTROS M G
Language: EN
Application: US 1999311459 A 19990513 (Local application)
Original IPC: C10L-1/18(A) C10L-1/22(B)
Current IPC: C10L-1/18(A) C10L-1/22(B)

WIPO

Publication No. WO 2000069998 A1 (Update 200109 B)

Publication Date: 20001123

Assignee: EQUISTAR CHEM LP; US (EQUI-N)

Inventor: BOTROS M G

Language: EN (69 pages, 0 drawings)

Application: WO 2000US12199 A 20000504 (Local application)

Priority: US 1999311459 A 19990513

Designated States: (National Original) AE AG AL AM AT AU AZ BA BB BG BR BY CA CH CN CR CU CZ DE DK DM DZ EE ES FI GB GD GE GH GM HR HU ID IL IN IS JP KE KG KP KR KZ LC LK LR LS LT LU LV MA MD MG MK MN MW MX NO NZ PL PT RO RU SD SE SG SI SK SL TJ TM TR TT TZ UA UG UZ VN YU ZA ZW

(Regional Original) AT BE CH CY DE DK EA ES FI FR GB GH GM GR IE IT KE LS LU MC MW NL OA PT SD SE SL SZ TZ UG ZW

Original IPC: C10L-1/18(A) C10L-1/22(B)

Current IPC: C10L-1/18(A) C10L-1/22(B)

Dialog Basic Searching Techniques

Basic Dialog Commands

B	BEGIN:	Use this command to access <i>DWPI</i> . E.g. b 351
E	EXPAND:	Use this command to view an alphabetical or numerical list of terms similar to your search term. E.g. e pa=ford motor e pn=ep 123456
S	SELECT:	Use to search a keyword, phrase, or field of information. E.g. s pn=ep 123456
T	TYPE:	Use to display search results on your computer screen. Complete command: T Set number Format number Item number(s) E.g. t s3/19/1-5
DS	DISPLAY SETS:	This command will display a list of previous search statements.
LOGOFF	LOGOFF	Disconnects you from Dialog.

Truncation

?	The question mark is placed at the end of a search term. This will instruct the computer to retrieve all items that contain the stem plus any variations. E.g. s manag? This will retrieve manage, managing, manager.
? ?	Putting a space between the two question marks commands the Dialog search engine to look for the stem and one additional character. E.g. s color? ? This will retrieve color and colors.

Combining Search Terms

OR	At least one of the search terms must appear in a record, useful for synonyms. E.g. s sun or moon or star
AND	BOTH terms must appear in the same record. E.g. s cat and dog
NOT	You DO NOT want the second term to appear in the record. E.g. s beverage not beer

TIP

Use the NOT operator with caution, as it may remove useful records from your search.

Proximity Operators

(W)	WITH:	Terms must be in the exact order specified. E.g. s hard (w) disk
(xW)	xWITH:	Terms must be in the exact order specified within (x) number of words from one another. E.g. s online (3w) searching
(N)	NEAR:	Terms can be in any order. E.g. s rock (n) climb
(xN)	xNEAR:	Terms can be in any order within (x) number of words. E.g. s automatic (2n) drill
(S)	SUBFIELD:	Terms must occur in the same subfield in any order. E.g. s telephone (s) portable

Displaying *DWPI* Information

TIP

Please refer to Dialog Blue Sheet 351 from a complete list of all display formats.

Popular predefined formats for displaying *DWPI* records are listed below. To view the *DWPI* records, use the TYPE (T) command.

For example:

```
? S AA=1999-097448
S1      1      S AA=1999-097448

? T/19
```

- 1** DIALOG Accession Number
- 2** Basic Patent Record plus Basic Abstract, *DWPI* Title, Patent Assignee, Inventor, Keyword Indexing and Subscriber Codes
- 3** Patent Family Table, Filing Details Table (long form) plus Title, Patent Assignee and Inventor^{1,2}
- 4** Full Record with Tagged Fields, including Manual Codes³ and IPCs
- 5** Full Record with Basic Abstract, including all Subscriber Codes^{1,2}, IPCs and US Classifications
- 6** Title Index Terms (no Title), Additional Words, and Main *DWPI* Accession Number
- 7** Full Record including Technology Focus, excluding Extension & Documentation Abstracts and all Subscriber Codes^{1,2}, apart from *DWPI* Class, Manual Codes, plus IPCs, US Classifications and First Level data
- 8** All *DWPI* Accession Nos., Title Index Terms (no Title), Additional Words, No. of Patents/Countries, *DWPI* Class, Manual Codes, IPCs and US Classifications
- 9** Full (Maximum) Record including all abstracts Subscriber Codes, Filing Details Table (long form)^{1,2} and First Level data
- 11** DIALOG Accession Number and Main *DWPI* Accession Number
- 14** Full record (Format 4) plus Image

TIP

Use the word tag after the items will display in tagged formats

e.g. **t s1/4/all tag**

- 15 Full Record (Format 5) plus Image
- 17 Full Record (Format 7) plus Image
- 19 Full (Maximum) Record (Format 9) plus Image
- 23 Brief Format with Title, Patent Assignee, Basic Abstract, IPCs and US Classifications
- 25 Full Record with simplified Patent Family Table and Basic Abstract only, excluding Subscriber Codes¹ Format
- 26 *DWPI* Title plus Additional Words, and Main *DWPI* Accession Number
- 28 All *DWPI* Accession Nos., Title, Index Terms, Additional Words, *DWPI* Class, IPC, US Classifications and Subscriber Codes
- 29 First Level data plus *DWPI* Accession Number and *DWPI* Title
- 34 Full Record plus IPCs, US Classifications & Technology Focus, excluding Subscriber Codes
- 36 Title and Novelty
- 49 Master Record – Maximum Record plus all *DWPI* abstracts, all Subscriber Codes, all First Level data
- 59 Master Record (Format 49) plus Image
- 67 Full Record excluding Technology Focus, Extension & Documentation Abstracts and all Subscriber Codes^{1,2}
- 69 Full Record including all *DWPI* abstracts, Subscriber Codes and Filing Details Table (long form)^{1,2}
- K KWIC (KeyWord In Context), displays a window of text

Examples using the TYPE command:

? t S1/8/1-10

This will display S1 using format 8 for records 1 through 10.

? t S2/17/1-5,20,100

This will display S2 using format 17 for records 1 through 5 & 20 & 100.

? t S2/19/10,15,50

This will display S2 using format 19 for records 10 & 15 & 50.

** For a definition of “basic,” see page 64, Glossary of Patent Terminology.

* You must have a special agreement with Thomson Scientific in order to access the subscriber coding. For more information, please contact your local Thomson Scientific office.

TIP

The Display command will display your search results a screen at a time

Sample Search

TIP

RT=IMAGE will narrow your answer set to only those records containing images.

```
? b 351
[File 351] Derwent WPI 1963-2006
(c) 2006 The Thomson Corporation. All rights reserved.

? s automobile? ? or (car or cars)
      146629      AUTOMOBILE? ?
      176896      CAR
      37539       CARS
S1     324590     S AUTOMOBILE? ? OR (CAR OR CARS)

? s s1 and rt=image
      324590      S1
      8169374     RT=IMAGE
S2     210425     S S1 AND RT=IMAGE

? t /19/1-5
```

Patent/Publication Number Searching

Step 1

Enter File 351 to access *DWPI*.

```
? b 351
[File 351] Derwent WPI 1963-2006
(c) 2006 The Thomson Corporation. All rights reserved.
```

Step 2a

Search for a Patent/Publication Number that does not include the publication year. Enter a space between the country code and serial number for all Patent/Publication Numbers.

```
? s pn=ep 234
S1          1          PN=EP 234
```

Step 2b

Search for a Patent/Publication Number (pre-2000) that includes the publication year and has a five-digit serial number. If there are less than five digits, backfill with zeros.

```
? s pn=wo 8500268
S2          1          PN=WO 8500268
```

Step 2c

Search for a Patent/Publication Number (post 2000) that has a six-digit serial number.

```
? s pn=au 2004212605
S5          1          S PN=AU 2004212605
```

Step 2d

Search for a Patent/Publication Number (post 2000) that has seven-twelve digit serial number.

```
? s pn=us 5123456
S6          1          S PN=US 5123456
```

TIP

If you are unsure of the Patent/Publication Number format, use the Expand (E) command to verify that you are using the correct format.

e.g. **e pn=ep 234**

Ref	Items	Index-term
E1	1	PN=EP 233998
E2	1	PN=EP 233999
E3	1	*PN=EP 234
E4	1	PN=EP 2340
E5	1	PN=EP 23400
?s	e3	

Step 3

Display your search results using the TYPE (T) command. See page 10, Displaying *DWPI* Information.

```
? t s8/5/1

8/5/1
Derwent WPI
(c) 2006 The Thomson Corporation. All rights reserved.

0005887985 Drawing available
WPI Acc no: 1992-116338/
XRPX Acc No: N1992-086992
Hand banding tool which tensions and clamps band and cuts off tail - has handle
containing mechanism with pivot lever operated action for gripping and
tensioning band and crimping lock buckle with tail cut-off
Patent Assignee: BAND-IT-IDEX INC (BAND-N)
Inventor: JANSEN G A
Patent Family (2 patents, 4 countries)
Patent Kind Date Application Kind Date Update Type
Number Number
EP 479623 A 19920408 EP 1991309148 A 19911004 199215 B
US 5123456 A 19920623 US 1990593124 A 19901005 199228 E

Priority Applications (no., kind, date): US 1990593124 A 19901005

Patent Details
Patent Number Kind Lan Pgs Draw Filing Notes
EP 479623 A EN 18 8
Regional Designated States,Original DE GB IT
US 5123456 A EN 18

Alerting Abstract EP A
The handle (10) of the banding tool forms the housing for the operating
mechanism. The spring-loaded pull-up lever (20) acts through a link (24) to
tension the band (12) which is threaded through the free buckle (14) with the
tail (134) fed through the entry slot (80).
When the band is fully tensioned, further movement of the lever (20) activates
the lever (26) and the locking/cutting head (42). The head (42) includes a
punch which crimps and locks the band, finally cutting of the tail.
USE/ADVANTAGE - A hand held banding tool that tensions, locks, and cuts the
band without the need for any further tools.

Title Terms /Index Terms/Additional Words: HAND; BAND; TOOL; TENSION; CLAMP;
CUT; TAIL; HANDLE; CONTAIN; MECHANISM; PIVOT; LEVER; OPERATE; ACTION; GRIP;
CRIMP; LOCK; BUCKLE; CUT-OFF

Class Codes
International Patent Classification
IPC Class Scope Position Status Version
Level Date
B21F-009/02 Main "Version 7"
B25B-025/00; Secondary "Version 7"
B65B-013/34

US Classification, Issued: 140093400, 140123600, 140150000

File Segment: EngPI; ;
DWPI Class: P52; P62; Q31
```

Japanese Publication Number Searching

Step 1

The first step towards successfully working with Japanese Patent/Publication Numbers in *DWPI* requires an understanding of the Japanese Imperial Year.

The Imperial Year returns to 1 when a new Japanese emperor ascends the throne of Japan. Hirohito became Japan's emperor in Western Year 1926 and the Imperial Year was therefore reset to 1. To convert from Western Year to Imperial Year and vice versa, you would **ADD** or **SUBTRACT** 1925. When Emperor Hirohito died on January 9, 1989, his son Akihito became the new Japanese emperor and the Imperial Year was again reset to 1. To convert from Imperial Year to Western Year and vice versa, from 1989 onward, you now **ADD** or **SUBTRACT** 1988.

Use the following chart to help you convert from Western Year to Imperial Year and vice versa.

Emperor	Type of Document		
	Kokai (JP-A)	Kokoku (JP-B) up to mid 1996	Toroku (JP-B) mid 1996 onwards
Hirohito up to 1989	JPYYNNNNNN YY = Year of the Emperor = Western Year - 1925 (2 digits) e.g. JP57023687	JPYYNNNNNN YY = Western Year (2 digits) e.g. JP86011279	-
Akihito until 2000	JPYYNNNNNN YY = Year of the Emperor = Western year - 1988 (2 digits) e.g. JP07195490	JPYYNNNNNN YY = Western year (2 digits) e.g. JP95122126	Numbered sequentially starting from 2500001 e.g. JP2787065
Akihito	JPYYYYNNNNNN YYYY = Western year (4 digits) e.g. JP2000154938	Now discontinued	Numbered sequentially

Examples of the conversion process:

Convert the Western Year 1986 to Imperial Year.	1986 SUBTRACT 1925	= 61
Convert the Western Year 1992 to Imperial Year.	1992 SUBTRACT 1988	= 4
Convert the Imperial Year 57 to Western Year.	57 ADD 1925	= 1982
Convert the Imperial Year 5 to Western Year.	5 ADD 1988	= 1993

Step 2

Determine which type of Patent/Publication Number to use.

Kokai These are unexamined applications that have been published. These publications are easily recognized in *DWPI* by the Kind Code A following the publication number. To search for Kokai publications you must use the Imperial Year for documents issued before 1st January 2000 and the Western Year for documents issued after 1st January 2000.

Kokoku

These documents are examined and accepted publications. They are distinguished by the Kind Code B. When searching for Kokoku documents in *DWPI*, you must use the Western Year. The Kokoku were replaced by new law Toroku documents in mid-1996.

Toroku

DWPI coverage started mid-1996. These GRANTED patents have a continuous serial number starting at 2,500,000 and have a kind code of B2 (Toroku) if they were previously published at the Kokai stage or B1 (Tokkyo Koho) if they were not previously published at the Kokai stage. Search for these just as you would search for a US Patent Number (see page 14, Patent/Publication Number Searching).

Step 3

Lastly, conduct your search using the following format

S PN=JP YYNNNNNN

Sample Search 1 : Japanese Kokai from 1984 with serial number 2345.

- 1 Convert the Western Year (1984) to the Imperial Year.
1984 SUBTRACT 1925 = Imperial year 59
- 2 Insert the Imperial Year into the publication number format.
S PN=JP 59NNNNNN
- 3 Add the serial number. If less than six digits, insert leading zeros.
s pn=jp 59002345

Sample Search 2: Find the following Japanese Kokoku publication number: JP 5/123 B

- 1 Convert the Imperial Year given (5) to the Western Year.
5 ADD 1988 = Western Year 1993
- 2 Insert the Western year into the publication number format.
S PN=JP 93NNNNNN
- 3 Add the serial number to the publication format. Since two digits are missing, back-fill with zeros.
s pn=jp 9300123

Sample Search 3: Find the following Japanese Toroku publication number JP 2509927 B2

- 1 Retain the format shown above
s pn=jp 2509927

Since the publication year is not included in the patent number there is no need to convert any part of the number before you search it.

TIP

If you do not find the record you are looking for, use the Expand command

e pn=jpyynnnnnn

Application/Priority Number Searching

TIP

If you do not find the record you are looking for, use the Expand command:

e an=92jp0004512

an= will search both the an and pr fields

TIP

All Japanese Application Numbers are searched using the Western Year.

Step 1

Enter File 351 to access *DWPI*.

```
? b 351
[File 351] Derwent WPI 1963-2006
(c) 2006 The Thomson Corporation. All rights reserved
```

Step 2a

Search for Application Numbers using the following (DIALOG) format: S AN=CC-NNNNNNN.

```
? s an=JP 2001337
S12          1          S AN=JP 2001337
```

Step 2b

Search for Priority Numbers using the following (DIALOG) format: S PR=YYYYCC-NNNNNNN

```
? s pr=US 2005659814
S8           1           S PR=US 2005659814
```

Step 2c

Use AN= to search both the Application and Priority Numbers.

```
? e an=1998wo-jp0001501
Ref          Items      Index-term
E1           1          AN=1998WO-JP0001499
E2           1          AN=1998WO-JP0001500
E3           1          AN=1998WO-JP0001501
E4           1          AN=1998WO-JP0001502

? s e3
S31 AN="98WO-JP01501"
```

Step 3

Display search results using the TYPE (T) command. See page 12, Displaying DWPI Information.

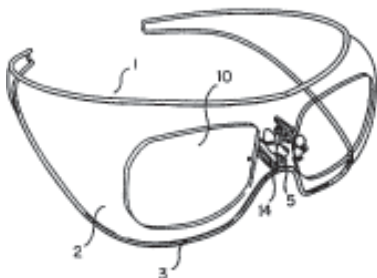
```
? t s3/17/1
Derwent WPI
(c) 2006 The Thomson Corporation. All rights reserved.

0009629705
WPI Acc no: 1999-580844/
XRPX Acc No: N1999-428821
Shield mask for glasses
Patent Assignee: POLARIS INTER AB (POLA-N)
Inventor: PREUTZ S
          Patent Family (2 patents, 20 countries)
Patent      Kind Date      Application      Kind Date      Update Type
Number
WO 1999050705 A1      19991007      WO 1998JP1501      A      19980401      199949      B
JP 2000541556 X      20021029      WO 1998JP1501      A      19980401      200274      E
          JP 2000541556      A      19980401

Priority Applications (no., kind, date): WO 1998JP1501 A 19980401
          Patent Details
Patent Number      Kind Lan Pgs Draw Filing Notes
WO 1999050705      A1      JA      24      6
National Designated States,Original      JP US
Regional Designated States,Original      AT BE CH CY DE DK ES FI FR GB GR IE IT LU
MC NL PT SE
JP 2000541556      X      JA
          PCT Application
          WO 1998JP1501
          Based on
          OPI patent
          WO 1999050705

Alerting Abstract WO A1
NOVELTY - The shield mask includes including a frame integrally having
portions having the functions of lens brim portions, a bridge portion and a
temple portion, a shield encircled by the frame for protecting the eyes, and
acceptance portion for accepting fitting of nose pads or refracting glasses
at the bridge portion of the frame. The acceptance portion includes two
opposed brackets having recess portions disposed inside the center portion
of the shield mask or two opposed plates having holes. Glasses equipped with
the nose pads are fitted to the shield mask, and include at least two rod-
like parts fitted into the holes and spring-like clamps for pressing the two
rod-like parts with a necessary and sufficient press force from the
transverse direction of the recess portions of the bracket or for fitting
and removing the rod-like parts into and from the holes from the transverse
direction of the plate.
USE - For glasses.
ADVANTAGE - The mask is capable of being easily fitted to, and removed from,
refracting glasses, protects the mounted glasses, and acts as a pair of
sunglasses, giving excellent fashionability.
DESCRIPTION OF DRAWINGS - The drawing shows a diagram to illustrate the
shield mask.
```

Main Drawing Sheet(s) or Clipped Structure(s)



Title Terms /Index Terms/Additional Words: SHIELD; MASK; GLASSES					
Class Codes					
International Patent Classification					
IPC	Class	Scope	Position	Status	Version
	Level				Date
G02C-007/10			Main		"Version 7"
File Segment: EngPI; ;					
DWPI Class: P81					
Original Publication Data by Authority					
...					

Step 4

If more than one Priority Number is in the record or if a Related Accession Number exists, see pages 22-25, Complete Patent Family Searching.

Complete Patent Family Searching

Find the complete patent family for US 4000000

Step 1

Enter File 351 to access *DWPI*.

```
? b 351
[File 351] Derwent WPI 1963-2006
(c) 2006 The Thomson Corporation. All rights reserved
```

Step 2

Conduct an effective Patent/Publication Number search. See page 14, Patent/Publication Number Searching.

```
? s pn=us 4000000
S11          1          PN=US 4000000
```

Step 3

Display your search results using the TYPE (T) command. See page 12, Displaying *DWPI* Information.

```
? t s11/ti,ax,pn,pr,pa/1

11/TI,AX,PN,PR,PA/1
Derwent WPI
(c) 2006 The Thomson Corporation. All rights reserved.
WPI Acc no: 1975-81520W/
Asphalt-aggregate mixts. mfr. - pref. using recovered road surfacing materials
Original Titles:
Vorrichtung und Verfahren zur Herstellung von Gemengen aus Asphalt und Zuschlagstoffen
Process for recycling asphalt-aggregate compositions
Asphalt-aggregate recycle
Asphalt-aggregate recycle
Patent Assignee: MENDENHALL R L (MEND-I)
Patent Number      Kind  Date      UpdateType
BE 831337           A    19751103   197550 B
NL 197508364       A    19760119   197605 E
DE 2456143         A    19760129   197606 E
FR 2278844         A    19760319   197619 E
JP 51034228        A    19760323   197619 E
GB 1439420         A    19760616   197625 NCE
US 4000000         A    19761227   197702 E
CA 1020154         A    19771101   197746 E
```

TIP

If the *DWPI* record does not have a Related Accession Number or multiple Priority Numbers STOP! You have the Complete Patent Family

```

US 4067552          A      19780110      197804 E
US 4074894          A      19780221      197810 E
JP 53134022         A      19781122      197901 E
IT 1039878          B      19791210      198013 E
US RE30685          E      19810721      198132 E

```

```

Priority Applications (no., kind, date): US 1976697321 A 19760830; GB
197435597 A 19740813; US 1976697322 A 19760830; US 1975601177 A 19750801; US
1975601176 A 19750801; US 1974488518 A 19740715; US 1974360464 A 19740515;
US 1973360464 A 19730515; US 1972286618 A 19720905; US 1972286613 A
19720905; US 1977758316 A 19770110

```

Original Publication Data by Authority

Assignee name & address:

```

MENDENHALL R L, (MEND-I),
Mendenhall, Robert L., Las Vegas, Nev., US,
Mendenhall, Robert L., NV, US, US
Mendenhall, Robert L., NV, US, US
Mendenhall, Robert L., NV, US, US

```

Basic Derwent Week: 197550

Step 4

Examine the *DWPI* record. If the record contains a Related Accession Number

OR

Contains MORE than ONE Priority Number, You MUST conduct a complete patent family search.

Step 5

Conduct a complete patent family search using the MAP command followed by the special field code ANPRYY. This will extract all of the priority information from the record and save it to file. Remember to include the TEMP command to avoid having this data permanently stored on the Dialog system. Enter the set number of the record from which you will be conducting the search.

```

? map anpryy t
Temp SearchSave "TC132" stored
1 Select Statement, 11 Search Term(s)
SearchSave TC132

1 SearchSave(s), 11 Search Term(s)

```

Step 6

Use the Execute Steps (EXS) command followed by the temporary file serial number. The Dialog system will search all of the patent family priority numbers in *DWPI* to see if any records are part of that patent family. The results of EXS command indicate that nine *DWPI* records are related patents

```

? exs tc132
S12          9      S AN=GB 197435597 + AN=US 1972286613 + AN=US
1972286618 + AN=US 1973360464 + AN=US 1974360464 +
AN=US 1974488518 + AN=US 1975601176 + AN=US 1975601177
+ AN=US 1976697321 + AN=US 1976697322 + AN=US
1977758316

```

Step 7

Verify that there are nine *DWPI* records that make up the complete patent family. Use the MAP command on the answer set S12 to search for any new priority numbers. Note, the Serial number has changed

```
? map anpryy s12
Temp SearchSave "TC133" stored
3 Select Statements, 17 Search Term(s)
SearchSave TC133

1 SearchSave(s), 17 Search Term(s)
```

Step 8

```
Execute (EXS) the saved search.
? exs tc133
S13          9          S AN=GB 197435597 + AN=US 1972286613 + AN=US
1972286618 + AN=US 1973360464 + AN=US 1974360464 +
AN=US 1974487911 + AN=US 1974487927 + AN=US 1974487928
+ AN=US 1974488518 + AN=US 1974537562 + AN=US
1975601176 + AN=US 1975601177

EXS: S AN=US 1976697321 + AN=US 1976697322 + AN=US 1976715870 + AN=US
1976734292 + AN=US 1977758316

S14          5          S AN=US 1976697321 + AN=US 1976697322 + AN=US
1976715870 + AN=US 1976734292 + AN=US 1977758316

EXS: S S13:S14
S15          9          S S13:S14
```

Step 9

If the number of *DWPI* records retrieved in S5 is the same number that was retrieved in S3, STOP. This is the complete patent family. If the number increases, repeat steps 7-8 until the number no longer increases.

Step 10

Display the search results using the TYPE (T) command. See page 12, Displaying *DWPI* Information.

```
? t s15/36/1-3
15/36/1
Derwent WPI
(c) 2006 The Thomson Corporation. All rights reserved.

0002138435
WPI Acc no: 1981-25189D/
Liq. asphalt compsn. - for adding to asphalt-aggregate recycle compsns.,
comprises asphalt and petroleum hydrocarbon
Alerting Abstract
```

15/36/2
Derwent WPI
(c) 2006 The Thomson Corporation. All rights reserved.

0001769899
WPI Acc no: 1979-B2977B/
**Asphalt-aggregate sleeve mixer - has sleeve extending around rotatable drum
to define final mixing chamber
Alerting Abstract**

15/36/3
Derwent WPI
(c) 2006 The Thomson Corporation. All rights reserved.

0001660413
WPI Acc no: 1978-L2203A/
**Prodn. of asphalt-aggregate compositions - uses rotatable drum having
heating pipes and being capable of returning unburned hydrocarbon(s) into
heating chamber
Alerting Abstract**

Inventor Searching

Find all the patents in *DWPI* for which G.E. Wright is the inventor

Step 1

Enter file 351 to access *DWPI*.

```
? b 351
[File 351] Derwent WPI 1963-2006
(c) 2006 The Thomson Corporation. All rights reserved
```

Step 2

Use the Expand (E) command to help identify inventors. The Expand command will show all items in the *DWPI* database index that are alphabetically similar to the inventor's last name, first initial, and middle initial (if known). It also shows the number of hits for each item.

AU= index comprises both *DWPI* standardised format Inventor names and the complete Inventor names from original filings. Using IV= will restrict searches to the original data only (LR= to search for the Agent-Legal Representative).

```
? e au=wright g

Ref      Items      Index-term
E1        1      AU=WRIGHT FREEMAN MASON
E2        1      AU=WRIGHT FREEMAN, MASON
E3       76      AU=WRIGHT G
E4       51      AU=WRIGHT G A
E5        9      AU=WRIGHT G B
E6       45      AU=WRIGHT G C
E7        5      AU=WRIGHT G D
E8       21      AU=WRIGHT G E
E9        3      AU=WRIGHT G E R
E10       5      AU=WRIGHT G F
E11       1      AU=WRIGHT G G
```

Step 3

Select all the appropriate inventor(s) from the Expand list.

```
? s e3,e8,e9
? s e3,e8,e9
          76      AU=WRIGHT G
          21      AU=WRIGHT G E
          3      AU=WRIGHT G E R
S16     97      S E3,E8,E9
```

TIP

If you do not find the inventor(s) names that you are looking for, search for the named individual(s) in the Patent Assignee field (see page 28 Assignee/ Company Searching)

Step 4

Display your search results using the TYPE (T) command. See page 12, Displaying *DWPI* Information.

```
? t s16/3/1

16/3/1
Derwent WPI
(c) 2006 The Thomson Corporation. All rights reserved.

0016004263 Drawing available
WPI Acc no: 2006-535892/200655
Related WPI Acc No: 2004-690269
XRAM Acc no: C2006-167929
XRPX Acc No: N2006-429109
New metal chelate compounds useful in ink, which is useful in ink jet printing
Patent Assignee: FOSTER C E (FOST-I); JOHNSON K (JOHN-I); PATEL P (PATE-I); REGGATT M E (REGG-I); WRIGHT G (WRIG-I)
Inventor: FOSTER C E; JOHNSON K; PATEL P; REGGATT M E; WRIGHT G
Patent Family ( 1 patents, 1 countries )
Patent Number      Kind Date      Application Number      Kind Date      Update Type
US 20060150861 A1      20060713  WO 2004GB594      A      20040217  200655  B
US 2005547283      A      20050826

Priority Applications (no., kind, date): GB 200350895 A 20030306; US 2003472405 P 20030522

Patent Details
Patent Number      Kind Lan Pgs Draw Filing Notes
US 20060150861      A1      EN      13      0      PCT Application
WO 2004GB594
```

Assignee/Company Searching

Retrieve IBM's patent portfolio

Step 1

Enter File 351 to access *DWPI*.

```
? b 351
[File 351] Derwent WPI 1963-2006
(c) 2006 The Thomson Corporation. All rights reserved
```

Step 2

Use the Expand (E) command to identify Assignee/Company information (including original assignees).

```
? e pa=ibm
Ref      Items      Index-term
E1         2      PA=IBLU-N
E2         2      PA=IBLV-I
E3        26486      PA=IBM
E4         5      PA=IBM (IBMC)
E5         1      PA=IBM BRASIL IND MAQU
E6         1      PA=IBM BRASIL IND MAQU (IBMC)
E7         2      PA=IBM BRASIL IND MAQUINAS & SERVICOS LTDA
E8         2      PA=IBM BRASIL IND MAQUINAS & SERVICOS LTDA (IBMC)
E9         1      PA=IBM BUSINESS CONSULTING SERVICES KK
E10        1      PA=IBM BUSINESS CONSULTING SERVICES KK (IBMC)
E11        3      PA=IBM BUSINESS MACHINES CORPORATION
```

Step 3

Select the third entry (E3) which retrieves all entries that contain the word IBM.

```
? s e3
S1        26486      PA='IBM'
```

Step 4

Search the Thomson Scientific Patentee Code for IBM. Thomson Scientific has special codes for over 21,000 companies; these are found in the *DWPI* Patentee Codes Manual and on the Thomson Scientific web site Patentee Code Look Up facility.

```
? s ck=ibmc
S2         64903      S CK=IBMC
```

TIP

If the company you are looking for does not have its own Patent Assignee Code, then you should follow steps 1-3 and then display the records as per step 6.

Step 5

Combine the results from the Expand list and the Patentee Code using the (OR) command.

```
? s s1 or s2
          26486      S1
          64903      S2
S3        64909      S S1 OR S2
```

Step 6

Use the TYPE (T) command to display your results. See page 12, Displaying *DWPI* Information.

```
? t s3/3/1

3/3/1
Derwent WPI
(c) 2006 The Thomson Corporation. All rights reserved.

0016069688 Drawing available
WPI Acc no: 2006-601319/200662
XRPX Acc No: N2006-484493
Programmable clock signal generator for latch circuit, has programmable
clock delay circuit for delaying signal determined by programmable bits, and
scan mode clock signal delay inhibit circuit that inhibits delay of clock
signal
Patent Assignee: INT BUSINESS MACHINES CORP (IBMC)
Inventor: CHAN Y H; FREESE R T; PELELLA A R
          Patent Family ( 1 patents, 1 countries )
Patent      Kind  Date      Application      Kind  Date      Update  Type
Number
US 20060179375      A1      20060810      US 200554311      A
          20050209      200662 B

Priority Applications (no., kind, date): US 200554311 A 20050209

          Patent Details
Patent Number      Kind  Lan  Pgs  Draw  Filing Notes
US 20060179375      A1   EN   6    1
```

Using Date Ranging, *DWPI* Country Information and *DWPI* Updates/Year(s)

Searching for Dates

All dates should be searched using the four-digit year format. All dates read Year, Month, Day.

To Search for:	Type:
Publication Date (April 30, 2006)	s pd=20060430
Publication Month (July 1994)	s pm=199407
Publication Year (1996)	s py=1996
Publication Year Basics*	s py=2001/pb
*This will retrieve only NEW inventions added to <i>DWPI</i> in 2001.	
Application Date (June 10, 1989)	s ad=19890610
Application Month (May 2003)	s am=200305
Application Year (1989)	s ay=1989
Priority Application Date (May 27, 1995)	s pr=19950527

All Publication and Application Dates may be Date Ranged as follows:

Publication Year (2001to 2004)	s py=2001:2004
Publication Year Basics (1981 to 1984)	s py=1981:1984/pb

TIP

The *DWPI* Basic is the first published patent document received by Thomson Scientific for a given invention. The Basic is not necessarily the priority or the first application to publish.

Searching for Country Information

To Search for:	Type:
Publication Country	s pc=us
Publication Country and all Designated States	s cc=dk
Designated States	s ds=gb
Publication Country and Year	s pc=jp(s)py=1997
Application Country	s ac=ep
Priority Country	s pr=us

Searching *DWPI* Update/Year

The *DWPI* update and year are displayed in the Patent Number field following each Patent Family member, indicating the year and week of entry into the *DWPI* database.

Example:

PATENT NO	KIND	DATE	APPLICAT NO	KIND	DATE	MAIN IPC	WEEK
WO 200010311	A1	20000224	WO 99CA720	A	9990806	H04M-001/60	200019 B

DWPI Update

Indicates *DWPI* Basic Document

To Search for:	Type:
<i>DWPI</i> Update	s dw=199740
Publication Country within a <i>DWPI</i> Update	s pc=wo(s)dw=199740
A range of <i>DWPI</i> Updates	s dw=200601:200632

Using *DWPI* Update Codes and Accession Numbers

DWPI Update Codes

All data added to *DWPI* is labeled with an update code indicating when it was loaded into *DWPI*. This code can be found in the file banner which is displayed when you connect to *DWPI*.

Example:

```
[File 351] Derwent WPI 1963-2006/UD=200662
(c) 2006 The Thomson Corporation. All rights reserved.
```

TIP

The Update Code represents the latest Update to the *DWPI* database.

where: UD = All additions and changes

Update Codes are very useful if you wish to isolate new or amended records on *DWPI*. They are commonly used for Alerts* to avoid retrieving records already seen in a previous search.

To Search For:	Type:
All Basic patent documents added to <i>DWPI</i> in file update 9701	s ub=199701
All Equivalent patent documents added to <i>DWPI</i> in the latest update	s ue=9999
All Material added to <i>DWPI</i> database in the latest update	s ud=9999

Searching *DWPI* Accession Number(s)

The *DWPI* Accession Number is a unique serial identification number consisting of the 2-digit year of entry and a six-digit number that is assigned to all *DWPI* records. The Related/Cross Reference Number (available from 1985 to present) contains the Accession Number(s) of other *DWPI* records that are considered part of the full Patent Family. For more information on Patent Family Searching, see page 22, Complete Patent Family Searching.

Example:

```
WPI Acc no: 1997-012383
```

To Search For:	Type:
Main <i>DWPI</i> Accession Number(s)	s aa=2006-302964
Related <i>DWPI</i> Accession Number(s)	s ax= 2003-117253

Subject/Keyword Searching

Conduct a keyword search on production methods for inks that are used in colour inkjet printers

Step 1

Enter File 351 to access *DWPI*.

TIP

'British' English is normally used when compiling *DWPI* but recommend using American spelling.

```
? b 351
[File 351] Derwent WPI 1963-2006
(c) 2006 The Thomson Corporation. All rights reserved
```

Step 2

The search terms have been separated by the Near (N) operator to give the search more flexibility (see page 10 for the Near to operator). The ? truncation symbol will find all the variations of the search term "PRINT".

```
? s ink(2n)jet(2n)print?
                143717    INK
                145706    JET
                660263    PRINT?
S5              27250     S  INK(2N)JET(2N)PRINT?
```

Step 3

In this step, we have combined the results of the above set S5 with a Keyword Search on color using the "AND" operator. Notice the use of the British and American spelling for color/colour.

```
? s s1 and (color? or colour?)
                27250     S5
                307738    COLOR?
                362976    COLOUR?
S6              7737     S  S5 AND (COLOR? OR COLOUR?)
```

Step 4

The results of the above set S6 are combined with a Keyword Search on production. Please note the use of the Thomson Scientific abbreviation for production (prodn). See page 62, Thomson Scientific Standard Abbreviations.

```
? s s2 and (prodn or production)
? s s6 and (prodn or production)
                7737     S6
                478549    PRODN
                798357    PRODUCTION
S7              808     S  S6 AND (PRODN OR PRODUCTION)
```

Step 5

Enter the DS command to display the search history.

```
? ds
S5          27250      S  INK (2N) JET (2N) PRINT?
S6          7737      S  S5 AND (COLOR? OR COLOUR?)
S7          808       S  S6 AND (PRODN OR PRODUCTION)
```

Step 6

Display your search results using the TYPE (T) command. See page 12, Displaying *DWPI* Information.

```
? t 3/26/1
DIALOG (R) File:351:Derwent WPI
(c) 2000 Derwent Information Ltd. All rts. reserv.
012975726
WPI Acc No:      00-147575/200013
                  Ink-jet receptor for image graphics such as
                  advertisements comprises top-surface providing
                  layer which is weakly bonded to temporary
                  carrier layer
```

DWPI Basic Index

All unqualified keywords are automatically searched in the *DWPI* Basic Index. This index consists of the following fields:

Title Words	all words from the value-add <i>DWPI</i> Title, plus all words from the original title, where available (German, French or English language)
Title Terms	standardised forms of words in the value-add <i>DWPI</i> Title
Additional Words	words describing concepts not included in the value-add <i>DWPI</i> Title
Tech Focus	supplementary information to the value-add <i>DWPI</i> Abstract
Novelty Words	words describing the novelty of the invention
Abstract Words	all words from the value-add <i>DWPI</i> Abstract, Extension Abstract and Documentation Abstract, plus all words from the original abstract (where available - German, French or English language)
First Claim Words	all words from the original first Claim, where available (German, French or English language)
DWPI Title	Rewritten and intellectually enhanced by Thomson Scientific's abstractors. Search <i>DWPI</i> value-add titles only by post-qualifying search term with /ti. E.g. s mouse/td
Title Terms	Useful for finding variations of a word. E.g. s lock Dialog will retrieve <i>DWPI</i> records containing "lock", "lockable", "locking" etc. in their title.
DWPI Abstract(s)	Written and enhanced by Thomson Scientific's content experts to provide a Use/Advantage statement and information about the patent drawings. Some records will not have abstracts associated with them. See Thomson Scientific's Global Patents Sources for details. To eliminate records that do not have abstracts, use the following command: E.g. s S3/ABS Search for <i>DWPI</i> value-added Abstracts only by post-qualifying search term with /da

TIP

The Title Terms are NOT a replacement for proper truncation of search terms.

DWPI Value-Add Abstracts

As well as containing technical content, the abstracts also include several subheadings to make the description of the invention easier to read:

Novelty	Outlines the novelty of the invention.
Detailed Description	Optional paragraph included when it is not possible to summarise the main claims of the invention within the novelty field.
Activity	Used to describe the biological activity of chemical or biological entities.
Mechanism of Action	Covers the biological mechanism of action for chemical or biological entities (where given).
Use	This paragraph is always present, and covers all the uses (applications) of the invention in terms of its different technology areas. If there are no disclosed uses, this is stated.
Advantage	Covers the advantages of the invention as described by the author.
Technology Focus	Designed to enable end-user scientists and engineers, in various sectors, to quickly identify if a patent document is of real interest to them. Separate headed paragraphs describe the invention from different technological viewpoints - immediately bringing home the importance of the patent to a variety of disciplines.
Extension Abstract	Providing greater detail and in-depth information, the new Extension Abstract field adds further clarity to Thomson Scientific's value added description of the invention. As such it is of great value to the end user scientist. To facilitate this, the Extension Abstract is written using separate headed paragraphs, so presenting the content in an easily understood way.
Description of Drawing(s)	Explanation of technical drawings included in the record.

British/American Spellings and Terminology

To conduct a complete Subject/Keyword search, it is extremely important to search British as well as American spellings and terminology.

Some examples:

British	American
Tyre	Tire
Colour	Color
Sulphur	Sulfur
Nappy	Diaper
Torch	Flashlight
Lift	Elevator

Using the Thomson Scientific *DWPI* Classification System

TIP

Download your free copy of the *DWPI* Classification Guide:

www.scientific.thomson.com/media/scpdf/derwentclass.pdf

Search for patents on antilock braking systems (ABS) for automobiles and other vehicles

Thomson Scientific categorizes patent documents using a simple classification system for all areas of technology. This unique classification system has been consistently applied to all patent documents by Thomson Scientific's subject specialists since 1970. The *DWPI* Classifications provide a uniform and accurate indexing tool that will allow you to effectively clarify ambiguous keywords and broaden or narrow your Subject/Keyword searches. See page 40, Using the *DWPI* Classification System: Sample Page.

Step 1

Enter File 351 to access *DWPI*.

```
? b 351
[File 351] Derwent WPI 1963-2006
(c) 2006 The Thomson Corporation. All rights reserved
```

Step 2

Begin by searching all the variations of antilock brakes. See pages 33-35, Subject/Keyword searching.

```
? s abs or (antilock? or anti(w)lock?) (w)brak?
      21394      ABS
      3025      ANTILOCK?
      317233     ANTI
      447157     LOCK?
      4425      ANTI(W)LOCK?
      168077     BRAK?
      4756      (ANTILOCK? OR ANTI(W)LOCK?) (W)BRAK?
S8    24505     S ABS OR (ANTILOCK? OR ANTI(W)LOCK?) (W)BRAK?
```

Step 3

Display your search results using the TYPE (T) command. See page 12, Displaying *DWPI* Information.

```
? t s8/3/2

8/3/2
Derwent WPI
(c) 2006 The Thomson Corporation. All rights reserved.

0016068645
WPI Acc no: 2006-600276/200662
XRAM Acc no: C2006-185490
Thermoplastic composite plastic sheet composition employing polycarbonate
resin, abs resin, phenol, phosphite, benzotriazole, hindered amine light
stabilizers with high molecular weight and low molecular weight, and
titanium trioxide
Patent Assignee: HYUNDAI MOTOR CO LTD (HYUN-N)
Inventor: NAH K S
          Patent Family ( 1 patents, 1 countries )
Patent      Kind  Date      Application      Kind  Date      Update  Type
Number
KR 2006000706 A      20060106      KR 200449644      A      20040629      200662  B

Priority Applications (no., kind, date): KR 200449644 A 20040629

          Patent Details
Patent Number      Kind  Lan  Pgs  Draw  Filing Notes
KR 2006000706      A      KO      0
```

TIP

The second record has nothing to do with antilock brakes. ABS is an acronym for a polymer as well as the abbreviation for antilock brakes. In order to search with greater precision, use the *DWPI* Classification System found in the *DWPI* Classification Guide.

Step 4

Use DC= and the appropriate *DWPI* classification to narrow the search on antilock brakes.

```
? s s8 and dc=q18
          24505      S8
          47751      DC=Q18 (BRAKE CONTROL SYSTEMS)
S9          4555      S S8 AND DC=Q18
```

Step 5

Display the search results using the TYPE (T) command. See page 12, Displaying DWPI information.

```
? t s9/8/1

9/8/1
Derwent WPI
(c) 2006 The Thomson Corporation. All rights reserved.

0015996705 Drawing available
WPI Acc no: 2006-528375/200654
XRPX Acc No: N2006-423209
Title Terms /Index Terms/Additional Words: HYDRAULIC; PUMP; ASSEMBLE;
ANTILOCK; BRAKE; SYSTEM; ECCENTRIC; DRIVE; ACTUATE; DISPOSABLE; UNIT; MOVE;
SIMULTANEOUS; AXIS; TWO; POSITION
Class Codes

International Patent Classification
IPC                Class   Scope  Position  Status   Version
                   Level
F04B-0019/00        A         I         F            B           20060101
B60T-0017/02        A         I         F            B           20060101
B60T-0017/00        C         I         F            B           20060101
US Classification, Issued: 417470000

File Segment: EngPI; ;
DWPI Class: Q55; Q18
```

DWPI Classification sample page

Q Mechanical

Mechanical Engineering - all IPC B60-B68, E and F.

Q1 Vehicles in General

- Q11 Wheels, tyres, connections (B60B-D)
- Q12 Suspension systems (B60G)
- Q13 Powertrain, chainset, transmission systems and their control (B60K,W, B62M)
- Q14 Vehicle accessories (B60H,N,Q,R, B62H-J)
- Q15 Vehicle arrangements for transporting special loads (B60P)
- Q16 Vehicle servicing, maintenance, cleaning equipment, vehicle design and manufacture (B60S)
- Q17 Vehicle construction, fittings, propulsion arrangements (B60J-K,R,V-W)
- Q18 Brake systems, steering systems, control (B60T, B62L)
- Q19 Vehicle applications

Q2 Special Vehicles

- Q21 Railways (B60L-M, B61)
- Q22 Hand/animal drawn vehicles (B62B-C)
- Q23 Cycles – discontinued 200607 and incorporated into Q11-Q19
- Q24 Ships, waterborne vessels, related equipment (B63)
- Q25 Aircraft, aviation, cosmonautics (B64)

Q3 Conveying, Packaging, Storing

- Q31 Packaging, labelling (B65B,C)
- Q32 Containers (B65D001-037)
- Q33 Closures (B65D039-055)
- Q34 Packaging elements, types (B65D057-091)
- Q35 Refuse collection, conveyors (B65F,G)
- Q36 Handling thin materials (B65H)
- Q37 Container traffic (pre-1984 only - B65J)
- Q38 Hoisting, lifting, hauling (B66)
- Q39 Liquid, handling, saddlery, upholstery (B67,8)

Q4 Buildings, Construction

- Q41 Road, rail, bridge construction (E01)
- Q42 Hydraulic engineering, sewerage (E02,3)
- Q43 General building constructions (E04B)
- Q44 Structural elements (E04C)
- Q45 Roofing, stairs, floors (E04D,F)
- Q46 Building aids, special structures (E04G,H)
- Q47 Locks, window and door fittings (E05)
- Q48 Blinds, shutters, ladders, doors (E06)
- Q49 Mining (E21)

Q5 Engines, pumps, compressors, fluid pressure actuators

- Q51 Internal combustion engines, reciprocating engines, rotary engines (F01K-P, F02B,D,F, G,M,N,P)

- Q52 Reaction engines, external combustion, gas turbines, rockets (F01D, F02C,K,M)
- Q53 Positive displacement fluid engines (i.e. driven by fluid) (F03C)
- Q54 Non-positive displacement fluid engines (i.e. driven by fluid), Miscellaneous motors and machines for producing mechanical power/thrust (F03B,D,G,H)
- Q55 Positive displacement fluid machines/pumps/compressors (i.e. for driving fluid) (F04B,C)
- Q56 Non-positive displacement fluid machines/pumps/compressors (i.e. for driving fluid) (F04D,F)
- Q57 Fluid-pressure actuators, hydraulic/pneumatics in general (F15)

Q6 Engineering Elements

- Q61 Fastening elements, connections (F16B)
- Q62 Shafts and bearings (F16C)
- Q63 Couplings; clutches, brakes; springs; dampers (F16D,F)
- Q64 Belts, chains, gearing (F16G,H)
- Q65 Pistons, cylinders, packing (F16J)
- Q66 Valves, taps, cocks, vents (F16K)
- Q67 Pipes, joints, fittings (F16L)
- Q68 Other engineering elements (F16M-S)
- Q69 Storing/distributing gas/liquid (F16T, F17)

Q7 Lighting, Heating

- Q71 Lighting (F21)
- Q72 Steam generation (F22)
- Q73 Combustion equipment/processes (F23)
- Q74 Heating, ranges, ventilating (F24)
- Q75 Refrigeration, liquefaction (F25)
- Q76 Drying (F26)
- Q77 Furnaces, kilns, ovens, retorts (F27)
- Q78 Heat exchange in general (F28)
- Q79 Weapons, ammunition, blasting (F41,42)

Using the International Patent Classification System

TIP

You can look up IPCs on the WIPO web site at:

<http://classifications.wipo.int/eng/ipc/index.htm>

Find all patents relating to illumination for fountains

The International Patent Classification System (IPC) is a hierarchical classification system produced by the World Intellectual Property Organization (WIPO). This is the patent classification system used by patent offices worldwide. It has been included in *DWPI* records since 1970. The IPC covers all areas of technology and is a useful system that will allow searching with great precision.

The 8th Edition of the IPC, also known as the IPC Reform, was introduced in January 2006. The 8th Edition saw the introduction of continual reclassification of all documents with each future revision of IPC codes. Prior to this revisions of the IPC only became effective from the date of introduction onwards and meant that for a full retrospective search it was necessary to use IPC codes from all previous editions. This does though mean that users need to consider the impact of potentially frequent changes to IPC classifications in their searches.

The 8th Edition of the IPC also saw the introduction of two levels of IPC, the Core and Advanced levels. Advanced IPC codes are generally applied by the larger patent offices and Core IPC codes by the smaller offices. This means that users will need to search both Core and Advanced IPC codes for their area of interest to ensure comprehensive worldwide retrieval.

Step 1

Enter File 351 to access *DWPI*.

```
? b 351
[File 351] Derwent WPI 1963-2006
(c) 2006 The Thomson Corporation. All rights reserved
```

Step 2

Conduct a Subject/Keyword search on illumination of fountains. See page 33, Subject/Keyword Searching.

```
? s fountain? and (light? or illumin?)
      4857 FOUNTAIN?
1068633 LIGHT?
      138747 ILLUMIN?
S10      756 S FOUNTAIN? AND (LIGHT? OR ILLUMIN?)
```

Step 3

Display your search results using the TYPE (T) command. See page 12, Displaying *DWPI* Information.

```
? t s10/26/1-4
```

```
10/26/1
```

```
Derwent WPI
```

```
(c) 2006 The Thomson Corporation. All rights reserved.
```

```
0016069442 Drawing available
```

```
WPI Acc no: 2006-601073/200662
```

```
Illuminating water fountain kit used in e.g. swimming pool, has illuminating apparatus comprising several high intensity light emitting diodes powered by battery, provided between float base and multi-tiered water head
```

```
10/26/2
```

```
Derwent WPI
```

```
(c) 2006 The Thomson Corporation. All rights reserved.
```

```
0016053293 Drawing available
```

```
WPI Acc no: 2006-584923/200660
```

```
Multi function fountain housing for dry basin decorative fountain system, has water supply aperture to receive water supply conduit, drain aperture to receive drain conduit and electric aperture to receive electrical lines
```

```
10/26/3
```

```
Derwent WPI
```

```
(c) 2006 The Thomson Corporation. All rights reserved.
```

```
0016043755 Drawing available
```

```
WPI Acc no: 2006-575386/200659
```

```
Illuminated writing instrument e.g. ballpoint pen has pivot pin that extends through the stand and a pivot end of the retainer to provide a pivot point for the retainer arm to rotate
```

```
10/26/4
```

```
Derwent WPI
```

```
(c) 2006 The Thomson Corporation. All rights reserved.
```

```
0016029842 Drawing available
```

```
WPI Acc no: 2006-561472/200658
```

```
Writing implement e.g. ball-point pen, for use by children, has writing unit producing current closing contact to illuminant and energy source after overpowering of defined imprint force, whereby illuminant emits optical signal
```

Step 4

If you do not have access to the IPC Classification Manuals, CD-ROM, or the Internet, you can find the appropriate IPC using the RANK command. Dialog's RANK command allows you to conduct a statistical analysis on the answer set of your choice. The results displayed will be in order from most to least posted IPCs in the answer set.

TIP

Step 4 is based on the assumption that the most heavily posted IPC will be relevant to your search topic. If you have any questions when using the IPCs, please contact your local Thomson Scientific Help Desk for assistance.

```
? rank ic
? rank ic
Started processing RANK
Completed Ranking 756 records
DIALOG RANK Results
-----
RANK: S1/1-756   Field: IC=   File(s): 351
(Rank fields found in 755 records - 1331 unique terms) Page 1 of 167
RANK No.   Items   Term
-----
1           94     B05B-017/08
2           78     G03F-007/00
3           74     F21P-007/00
4           71     B41C-001/10
5           57     B41N-001/14
6           55     C09D-011/00
7           47     G03F-007/004
8           43     B41M-005/00

P = next page      Pn = Jump to page n
P- = previous page M = More Options      Exit = Leave RANK
To view records from RANK, enter VIEW followed by RANK number,
format, and item(s) to display, e.g., VIEW 2/9/ALL.
Enter desired option(s) or enter RANK number(s) to save terms.
```

Step 5

Search the IPC F21P-007/00 in DWPI.

```
? s ic="F21P-007/00"
S2           160     S IC=F21P-007/00
```

Step 6

Display your search results using the Type (T) command. See page 12, Displaying DWPI Information.

TIP

Here is one of the records retrieved using the IPC code that was not retrieved using keywords only. This record and many others like it could have been missed if the IPCs had not been used.

```
? t s2/23/1-2

2/23/1
Derwent WPI
(c) 2006 The Thomson Corporation. All rights reserved.

0011159940 Drawing available
WPI Acc no: 2002-097339/200213
XRPX Acc No: N2002-071952
Colored light irradiation device for use in water, particularly a hydro-
message bath, irradiating light of different colors using fiber optics
cooperating with a transparent ring
Patent Assignee: GASPAROTTO M P (GASP-I)
Alerting Abstract WO A1
NOVELTY - The device delivers colored water by irradiating colored light,
located in the wall (11) of a bath tub (26). The device uses a water
delivery mouth (22) to which fiber optics are associated. The mouth has a
channel (21) to introduce water.
DESCRIPTION - A transparent clamping ring (12) cooperates with flat packing
```

(13) positioned between the tub wall and the ring. The ring is made from a material which is a strong conductor of light. Fiber optics (20) transmit light to the ring and an outer element (15) which surround the jet of water and color it.

USE - Irradiating light into water either as a mass or nebulized or in drops in a tank.

ADVANTAGE - Allows different colors and intensities of light.

DESCRIPTION OF DRAWINGS - The drawing shows the light irradiation device...

...

Title Terms /Index Terms/Additional Words: LIGHT; IRRADIATE; DEVICE; WATER; HYDRO; MASSAGE; BATH; OPTICAL; COOPERATE; TRANSPARENT; RING

Class Codes

International Patent Classification					
IPC	Class Level	Scope	Position	Status	Version Date
F21P-007/00; F21V-008/00			Main		"Version 7"

2/23/2

Derwent WPI

(c) 2006 The Thomson Corporation. All rights reserved.

0010229042 *Drawing available*

WPI Acc no: 2000-540379/

Illuminator for a fountain using low voltage induction

Patent Assignee: LEE D W (LEED-I)

Title Terms /Index Terms/Additional Words: ILLUMINATE; FOUNTAIN; LOW; VOLTAGE; INDUCTION

Class Codes

International Patent Classification					
IPC	Class Level	Scope	Position	Status	Version Date
F21P-007/00			Main		"Version 7"

Suggested methods for finding the right IPCs for your search

- Consult the Official Catchword Index to the IPCs which is available on the WIPO web site at www.wipo.int/classifications/ipc/ipc8/?lang=en. This is a keyword index of the IPCs.
- Refer to the IPC manual which is available on the WIPO web site at www.wipo.int/classifications/ipc/ipc8/?lang=en
- Retrieve a few relevant records and examine their IPCs using the TRIAL or TI TRIAL formats.
- Conduct a "rough search" and use the RANK command to determine which IPCs are being used.
- Contact your local Thomson Scientific Technical Support Center for expert assistance.

Format to search IPCs: **S IC=ANNA-NNNn/NNN**

Remember to search both Core and Advanced IPC codes to ensure comprehensive worldwide retrieval and to consider the impact of potentially frequent changes to IPC classifications following a reclassification cycle.

Using Thomson Scientific's Manual Codes

Search for patent information on video cameras that enable the user to locate their subject automatically by determining the direction of gaze

TIP

The Electrical (EPI) Manual Codes are now accessible to all searchers of *DWPI*. You MUST have a special account with Thomson Scientific to have access to the Chemical (CPI) Manual Codes. If you would like more information on how to gain access, please contact the Thomson Scientific Help Desk.

Thomson Scientific's Manual Code system is a hierarchical classification system developed by Thomson Scientific to enable precise retrieval of chemical (starting in 1963) and electrical (starting in 1980) patent technology within the *DWPI* database. This system is the most precise way to search *DWPI* due to the technical skill and consistent indexing provided by Thomson Scientific's staff.

Step 1

Enter File 351 to access *DWPI*.

```
? b 351
[File 351] Derwent WPI 1963-2006
(c) 2006 The Thomson Corporation. All rights reserved
```

Step 2

Conduct an effective Subject/Keyword Search on video cameras and combine the results with a Subject/Keyword Search on the viewfinder. Combine the result S3 with a Subject/Keyword Search on "direction of gaze" S4.

```
? s video()camera? or camcorder?
      277047 VIDEO
      222902 CAMERA?
      44967 VIDEO(W)CAMERA?
      8306 CAMCORDER?
S1    52295 S VIDEO()CAMERA? OR CAMCORDER?

? s focus? or autofocus? or rangefinder? or range() finder? or view()finder?
or viewfinder?
      114763 FOCUS?
      1718 AUTOFOCUS?
      1198 RANGEFINDER?
      587986 RANGE
      27955 FINDER?
      4040 RANGE(W)FINDER?
1838316 VIEW
      27955 FINDER?
      3688 VIEW(W)FINDER?
      4100 VIEWFINDER?
S2    124939 S FOCUS? OR AUTOFOCUS? OR RANGEFINDER? OR RANGE()
      FINDER? OR VIEW()FINDER? OR VIEWFINDER?
```

```

? s s1 and s2
    52295      S1
    124939     S2
S3 6918 S S1 AND S2

? s (eye? or gaze? or sight?) (3n) (line? or direction? or angle?)
    101667     EYE?
    18538      GAZE?
    21334      SIGHT?
    1223637    LINE?
    1365925    DIRECTION?
    679359     ANGLE?
S4      9655   S (EYE? OR GAZE? OR SIGHT?) (3N) (LINE? OR DIRECTION?
           OR ANGLE?)

=> s S3 and S4
    6918      S3
    9655      S4
S5      74    S S3 AND S4

```

74 Records meet the search criteria

Step 3

Display your search results using the TYPE (T) command. See page 12, Displaying *DWPI* Information.

```

? t s5/26/1-2
5/26/1
Derwent WPI
(c) 2006 The Thomson Corporation. All rights reserved.

0015248940 Drawing available
WPI Acc no: 2005-599026/200562
Optical component holder used in optical view finder of still camera, has
ribs of eyepiece lens, whose planar surfaces and convex portions are made to
contact with supporting structures formed at side surfaces of slit in
housing

5/26/2
Derwent WPI
(c) 2006 The Thomson Corporation. All rights reserved.

0015230755 Drawing available
WPI Acc no: 2005-580819/200559
Binocucorder for watching and recording sporting event, has periscope for
converging lines-of-sight of camcorder and binocular at target distance,
such that light reflected from target arrives at objective lens of camcorder

```

TIP

The Subject/Keyword Search has retrieved some information that is relevant to the topic. Use Thomson Scientific's Manual Codes to overcome the difficulty of choosing appropriate keywords.

Step 4

Search on the appropriate Thomson Scientific Manual Codes. Sub-group W04-M01 covers video camera and W04-M01D2G is for the determination of eye-gaze direction. Combined with either W04-M01D2C (range finding) or W04-M01D5D (focus control), your topic is defined.

W04-M01D2G was only introduced in 1997. To find all earlier records, the *DWPI* EPI Manual Codes Part I guide suggests that you combine your search with S05-D01C5A (electrical and electronic measurements of the body for non-medical purposes).

```

? s mc=w04-m01d2g and (mc=w04-m01d2c or mc=w04-m01d5d)
      143      MC=W04-M01D2G      (1997+ EYE-GAZE DIRECTION
      2220      MC=W04-M01D2C      (1992+ RANGE FINDING AND SUBJECT
      2102      MC=W04-M01D5D      (1992+ AUTOMATIC FOCUS CONTROL)
S6      18      S MC=W04-M01D2G AND (MC=W04-M01D2C OR MC=W04-M01D5D)

? s mc=s05-d01c5a and (mc=w04-m01d2c or mc=w04-m01d5d)
      7022      MC=S05-D01C5A      (1992+ ELECTRICAL DIAGNOSIS FOR
      2220      MC=W04-M01D2C      (1992+ RANGE FINDING AND SUBJECT
      2102      MC=W04-M01D5D      (1992+ AUTOMATIC FOCUS CONTROL)
S7      165      S MC=S05-D01C5A AND (MC=W04-M01D2C OR MC=W04-M01D5D)

? s S6 or S7
      18      S6
      165      S7
S8      176      S S6 OR S7

```

Step 5

Display your search results using the TYPE (T) command. See page 12, Displaying *DWPI* Information.

```

? t s8/28/1-2
8/28/1
Derwent WPI
(c) 2006 The Thomson Corporation. All rights reserved.

0015931896 Drawing available
WPI Acc no: 2006-463561/200647
XRPX Acc No: N2006-378947
Title Terms /Index Terms/Additional Words: IRIS; IMAGE; SYSTEM; PERSON;
IDENTIFY; AIRPORT; FINE; TRACK; STEER; CAMERA; EYE; BASED; REFLECT

Class Codes
International Patent Classification
IPC

|              | Class<br>Level | Scope | Position | Status | Version<br>Date |
|--------------|----------------|-------|----------|--------|-----------------|
| A61B-0003/10 | A              | I     | L        | B      | 20060101        |
| G06K-0009/00 | A              | I     | F        | B      | 20060101        |


US Classification, Issued: 382117000, 351221000

File Segment: EngPI; EPI;
DWPI Class: S05; T04; W04; P31
Manual Codes (EPI/S-X): S05-D01C5A; T04-D02A; T04-D07F; W04-M01C6; W04-M01D2C

```

8/28/2

Derwent WPI

(c) 2006 The Thomson Corporation. All rights reserved.

0015805371 *Drawing available*

WPI Acc no: 2006-361644/200637

XRPX Acc No: N2006-305567

Title Terms /Index Terms/Additional Words: SOUND; SIGNAL; PICK; UP; METHOD;
RECORD; IMAGE; PEOPLE; LOCATE; RANGE; DIRECTION; MICROPHONE; DETECT;
POSITION; ONE; PERSON; BASED; PREDETERMINED; RECOGNISE; FEATURE; ANALYSE;
ALGORITHM

Class Codes

IPC	International Patent Classification				
	Class Level	Scope	Position	Status	Version Date
A61F-0011/06	A	I	L	B	20060101
H04N-0007/14	A	I	F	B	20060101
H04S-0003/02	A	I	F	B	20060101
G10L-0021/02	A	I	F	B	20060101
A61F-0011/00	C	I	L	B	20060101
H04S-0003/00	C	I	F	B	20060101
G10L-0021/00	C	I	F	B	20060101

US Classification, Issued: 381071600, 348014080

File Segment: EngPI; EPI;

DWPI Class: S02; S05; T01; V06; W02; W04; X22; P32

Manual Codes (EPI/S-X): S02-A03B4; **S05-D01C5A**; T01-J10B2; T01-J18; T01-S03;
V06-B02; V06-H; W02-F08A3; W02-F08B3; W04-G05; **W04-M01D2C**; W04-M01M; W04-S05C; X22-L

Competitive Intelligence: Early Warning

What patent applications does Microsoft have pending in the U.S. Patent Office?

Step 1

Enter File 351 to access *DWPI*.

? b 351
 [File 351] **Derwent WPI** 1963-2006
 (c) 2006 The Thomson Corporation. All rights reserved

Step 2

Conduct an effective Assignee search. See page 28, Assignee/Company Searching

```

? e pa=microsoft
Ref      Items      Index-term
E1              2      PA=MICROSMART APPLIED MATERIALS CORP TW
E2              1      PA=MICROSOA CORPORATION
E3          11430      PA=MICROSOFT
E4              1      PA=MICROSOFT (MICT)
E5              1      PA=MICROSOFT BUSINESS SOLUTIONS APS
E6              1      PA=MICROSOFT BUSINESS SOLUTIONS APS (MICT)
E7              2      PA=MICROSOFT CO
E8              2      PA=MICROSOFT CO (MICT)
E9              2      PA=MICROSOFT CO US
E10             1      PA=MICROSOFT COPORATION
E11            1      PA=MICROSOFT COPORATION
...

? s e3-e9
          11430      PA=MICROSOFT
          1      PA=MICROSOFT (MICT)
          1      PA=MICROSOFT BUSINESS SOLUTIONS APS
          1      PA=MICROSOFT BUSINESS SOLUTIONS APS (MICT)
          2      PA=MICROSOFT CO
          2      PA=MICROSOFT CO (MICT)
          2      PA=MICROSOFT CO US
S9          11430      S E3-E9
  
```

Step 3

Search for all of Microsoft's priority U.S. applications.

```
? s S1 and pr=us
      52295      S1
      2599511    PR=US
S10    7968      S S1 AND PR=US
```

Step 4

Remove all of Microsoft's published U.S. patents. This will leave only Microsoft's U.S. patent publications that are still pending in the U.S. Patent Office but have been published elsewhere in the world.

```
? s S2 not pc=us
      124939      S2
      3936392    PC=US (UNITED STATES OF AMERICA)
S11    66525      S S2 NOT PC=US
```

Step 5

Display your search results using the TYPE (T) command. See page 12, Displaying *DWPI* Information.

```
? t s3/23/1

3/23/1
Derwent WPI
(c) 2006 The Thomson Corporation. All rights reserved.

0016066251 Drawing available
WPI Acc no: 2006-597882/200662
XRAM Acc no: C2006-184690
XRPX Acc No: N2006-482132
Insulating film for semiconductor element used in liquid crystal display,
has insulating particles whose dielectric constant is different from that of
insulating base material
Patent Assignee: SEIKO EPSON CORP (SHIH)
Alerting Abstract JP A
NOVELTY - The insulating film (4) contains insulating particles (41)
dispersed in an insulating base material (45). The dielectric constant of
insulating particle is different from the dielectric constant of the
insulating base material. The Young's modulus of the insulating film is 5-
100 GPa. The average particle diameter of insulating particle is 5-100 nm.
The insulating particle contains carbon or fluorine containing silica. The
insulating base material contains silica or silsesquioxane group compounds
or thermoplastic resin.
DESCRIPTION - An INDEPENDENT CLAIM is included for a formation method of
insulating film.
USE - For interlayer insulating film, gate insulating film, etc., for
semiconductor element (claimed) for electronic devices (claimed) such as
transmissive and reflective liquid crystal displays (LCDs), organic and
inorganic electroluminescence (EL) displays, electrophoretic display used in
notebook personal computer (PC), digital still camera, mobile phone,
projection-type display devices, television (TV), video camera, viewfinder
type and monitor direct-view type video tape recorder (VTR), car navigation
apparatus, pager, electronic notebook, electronic dictionary, calculator,
electronic game machine, word processor, workstation, video telephone, TV
monitor for crime prevention, electronic binocular, point-of-sales (POS)
terminal, cash dispenser of financial institution, automatic ticket vending
machine with touch panel, medical equipment e.g. electronic thermometer,
```

blood-pressure meter, blood-glucose meter, electrocardiography display device, ultrasonic diagnosing device, display device for endoscopes, fish finder, various measurement apparatus, measuring instruments used in vehicle such as aircraft and ship, flight simulator, other various monitors, etc.
ADVANTAGE - Insulating film having desired dielectric constant and excellent mechanical strength is formed easily.

DESCRIPTION OF DRAWINGS - The figure shows a longitudinal cross-sectional view of the insulating film.

3,4 insulating films

41 insulating particles

42 insulating base material

Title Terms /Index Terms/Additional Words: INSULATE; FILM; SEMICONDUCTOR; ELEMENT; LIQUID; CRYSTAL; DISPLAY; PARTICLE; DIELECTRIC; CONSTANT; BASE; MATERIAL

Class Codes

IPC	International Patent Classification				Version Date
	Class Level	Scope	Position	Status	
H01L-0021/312	A	I	F	B	20060101
H01L-0021/768	A	I	L	B	20060101
H01L-0023/522	A	I	L	B	20060101
H01L-0029/78	A	I	L	B	20060101
H01L-0021/02	C	I	F	B	20060101
H01L-0021/70	C	I	L	B	20060101
H01L-0023/52	C	I	L	B	20060101
H01L-0029/66	C	I	L	B	20060101

Creating a Current Awareness / Dialog Alert

The DIALOG Alert Service is a current awareness service that helps you track information on a particular topic, track a patent family's growth or track a company's patent activity. At a frequency of your choice (e.g. each time the database is updated or on a weekly, biweekly, or monthly basis) your search is run automatically.

You receive the new information by email, fax or regular mail and the results can also be delivered to other individuals.

You can create a DIALOG Alert profile using commands or use the Alerts Manager in DIALOG Web for an easy-to-use graphical interface. (www.dialogweb.com/)

Use the following sequence of steps to create a current awareness profile on DIALOG:

- 1 Devise your search strategy in the normal way.
- 2 Combine the appropriate special update code with your search using the value 9999 for the latest update. If this stage is omitted, DIALOG will assume the default update code of UD=, which will result in a hit every time a record that matches the saved strategy is modified in any way. To restrict the Alert results to only new inventions added to the database, use UB=9999. To restrict the Alert results to new inventions or new equivalents added to existing inventions, use UB,UE=9999.
- 3 Enter an optional PRINT TITLE to assign a title to the search. Titles may be up to 80 characters in length. The title will appear on the subject line of your email or on each page of your postal prints.
- 4 Enter the required PRINT command to identify the set of records to be delivered each time the Alert is run. (If you omit this command you will be prompted for this at a later stage.) If you wish to send the results directly by email, or to another person you will need to include this in the PRINT command line.

e.g. `PRINT S1/9/ALL ADDRESS ADEMAIL.`
- 5 Enter Y to confirm the address or N to decline the alternate address.
- 6 DIALOG will then display the estimated cost of current records in the file. If you DO NOT wish to receive records already in the file, enter N when prompted. If you DO want the current records, enter Y. The records will be delivered and your account number will be billed.

TIP

An Alert is a current awareness service that allows you to create a search strategy in *DWPI* and have new records meeting your search criteria being sent to you automatically on a weekly basis as they are added to *DWPI*.

- 7 Enter the SAVE ALERT command. Using DialogLink 5, a window pops-up showing the choice of receiving the Alert by update (82 times a year) or by a customer-chosen custom schedule. The custom schedule permits weekly, biweekly, or monthly Alerts delivered on a specified day and time. The command can be followed with an optional one- to six-character name (e.g. SAVE ALERT NEWPAT), otherwise, a serial number will be assigned automatically.

A typical Alert example is shown below:

```

?  S  INTERNET  AND  COMMUNICAT?
      119726      INTERNET
      783324      COMMUNICAT?
S1   47677       S  INTERNET  AND  COMMUNICAT?

?  S  S1  AND  UB=9999
      47677       S1
      11470       UB=9999
S2   63          S  S1  AND  UB=9999

?  PRINT  2/19/ALL

P009: PRINT 2/19/ALL (items 1-63) estimated cost of $327.60
Estimated postal surcharge ($0.10 per record per copy) is $6.30.

The PRINT command can be cancelled within 30 minutes
from the time of request.  Type:

      PRINT CANCEL Pnnn

To see a list of all active print requests and/or verify
the assigned print numbers, type:

      PRINT QUERY ACTIVE
or      PRINT QUERY ACTIVE DETAIL

```

Assign a name to your Alert, select frequency and additional options.

```
Alert "INTERNET" saved
```

To see a list of your alert profiles at any time, enter RECALL ALERT.

To review a specific alert, enter RECALL <<alert name>>.

To cancel an alert, enter RELEASE <<alert name>>.

```
?  RELEASE INTERNET
Alert internet released
```

DWPI Country Coverage and Kind Codes

Recent updates to the *DWPI* Country Coverage and Kind Codes list can be found on the Thomson Scientific website www.scientific.thomson.com.

Country	Status	Covered in <i>DWPI</i>
ARGENTINA (AR)	A	Examined granted patent (1974-1976 only)
AUSTRALIA (AU)	A	Open for public inspection application without examination
	A1	First publication of an unexamined standard patent application or the divisional standard/petty application of a standard patent/patent application
	A2	Amended first publication
	A4	Publication of granted innovation patent
	A5	Amended pre-grant open for public inspection application innovation patent
	A6	Amended post-grant open for public inspection application innovation patent
	A8	Correction to the bibliographic data of an A level publication
	A9	Correction to the patent specification of an A level publication
	B	Examined and accepted patent (from 199308)
	B1	First publication of the patent application occurring at acceptance of the application
	B2	Second publication of the patent application at acceptance of the application
	B4	Publication of a certified innovation patent
	B8	Correction to the bibliographic data of a B level publication
	B9	Correction to the bibliographic data of a B level publication
AUSTRIA (AT)	A	Open for public inspection application without examination (Aufgebot)
	A1	Publication of application with search report (from 200574)
	A2	Publication of application without search report (from 200574)
	A4	A2 document published on the same date as the B document with no corresponding A3 (from 200574)
	A8	Corrected title page of an A document (from 200574)
	A9	Complete reprint of an A document (from 200574)
	B	Examined granted patent (from 199303) (Patentschrift)
	B1	Patent (from 200574)
	B2	Patent amended after opposition (from 200574)
	B8	Corrected title page of a B document (from 200574)
	B9	Complete reprint of a B document (from 200574)
BELGIUM (BE)	A	Patent of invention (until 1986)
	A0	Application published with or without paying the search fee and which has not been examined (max. 6 or 20 years)
	A3	Initial text with search report
	A4	Changed/corrected text with search report
	A5	Text with amended claims and search report

Country	Status	Covered in <i>DWPI</i>
	A6	Patent of invention which has been neither searched nor examined - text as filed (6-year patent)
	A7	Corrected 6-year patent of invention
	B3, B5	Patent of invention - second publication with search report (max. 20 years)
	T	Transfer to BE national patent from EP application
	T7	European transfer
BRAZIL (BR)	A	Open for public inspection application which has been neither searched nor examined (Pedido de privilegio)
	A3	Pipeline patent application
CANADA (CA)	A	Examined granted patent before 1 st Oct 1989 (old law - <2000000) or open for public inspection application from 1 st Oct 1989 (new law - >2000000)
	B	Reissue of original patent (old law)
	C	Granted patents from 1 st Oct 1989 (old and new law)
	E	Reissue patents granted after 1 st Oct 1989 (old and new law)
CHINA (CN)	A	Patent application published before examination
	C	Examined patent application (from 199518)
CZECH REPUBLIC (CZ)	A3	Patent application published before examination according to Law 527/90 (from 199417)
	B6	Granted patent according to Law 527/90 (from 199417)
CZECHOSLOVAKIA (CS)	A	Patent application
	A1	Patent application
	A2	Patent application published in the course of examination (from 199232).
	B	Examined granted patent (from 199301)
DENMARK (DK)	A	Open for public inspection application which has been (i) neither searched nor examined, or (ii) searched, but not examined (from 1978)
	A	Granted patent based on application which has been searched and examined (until 12 th June 1978)
	B	Granted patent which has been searched and examined (from 199301)
EUROPEAN PATENTS (EP)	A	Open for public inspection application
	A1	Open for public inspection application - includes examiner's search report (from 199220)
	A2	Open for public inspection application - examiner's search report not included (from 199221)
	A3	Examiner's search report only for A2 (from 199221)
	A4	Supplementary Search Report
	A8	Corrected title page of an A document
	A9	Complete reprint of an A document
	B	Examined granted specification (pre-199220)
	B1	Examined granted specification (from 199220)
	B2	Amended specification (from 199220)
	B8	Corrected title page of a B document
	B9	Complete reprint of a B document
FINLAND (FI)	A	Open for public inspection application which has been neither searched nor examined
	B	Examined and searched patent application (from 199302)
	B1	Granted patent (new law) (from 199733)
FRANCE (FR)	A	Granted patent (until 1969)
	A	Open for public inspection application (from 1969)
	A1	Open for public inspection application neither searched nor examined

Country	Status	Covered in <i>DWPI</i>
GERMANY (DD) (former Democratic Republic)	A2	Application for certificate of addition to a patent of invention
	A3	Application for certificate of utility
	E	Certificate of addition to a patent of invention (until 1969)
	M	Special patent for medicament (until 1979)
	M	Certificate of addition to a special patent for medicament (until 1979)
	A	Examined granted patent (Patentschriften) (PS)
	A3	Patent specification which has been searched and examined (economic patent) (Wirtschaftspatent)
	A4	Economic patent (Wirtschaftspatent), (additional patent) according to paragraph 29(1) patent law 50
	A5	Patent specification which has been examined as to formalities but not searched (exclusive patent) (Ausschliessungspatent) (AS)
	A7	Patent specification which has been searched and examined (exclusive patent) (Ausschliessungspatent) (AS)
	A8	Patent specification which has been searched and examined (exclusive patent of addition) (Zusatzpatent)
	A9	Open for public inspection application (not published before May 1, 1992) (DD used by DE- office as a distinguishing feature) (Offenlegungsschrift)
	B	Re-examined after grant
	B1	Patent specification which has been searched and examined (economic patent) (Wirtschaftspatent)
	B3	Patent specification which has been searched and examined (exclusive patent) (Ausschliessungspatent)
	B5	Patent specification following an A7 document after an objection
	C	Examined granted patent
	C2	Economic patent (Wirtschaftspatent), amended according to paragraph 19 patent law 83 or corrected/amended according to paragraph 23 VerfAO 83
	C4	Patent specification which has been searched and examined (exclusive patent) (Ausschliessungspatent)
	C5	Patent specification, 3 rd publication according to patent law 83 extension act
GERMANY (DE)	A	Open for public inspection application before examination (from 1968) (Offenlegungsschrift) (OS)
	A	Examined accepted specification (pre-1974) Auslegeschrift (AS)
	A1	Open for public inspection application before examination (from 199301) (Offenlegungsschrift) (OS)
	A8	Correction of patent application (bibliographic change)
	A9	Correction of patent application (claims, description or drawings)
	B	Examined accepted specification (from 1974-1981) Auslegeschrift (AS)
	B3	Examined patent – first publication (from 200404)
	B4	Examined patent – second publication (from 200404)
	B8	Correction of examined patent (bibliographic change)
	B9	Correction of examined patent (claims, description or drawings)
	C	Granted patent from 1981 (from 198138) Patentschrift (PS)
	C1	Examined patent - first publication (from 199252) Patentschrift (PS)
	C2	Examined patent - second publication (from 199252)
	C5	Modified granted patent (previously kind code C3)
	C8	Correction of modified patent (bibliographic change)
C9	Correction of modified patent (claims, description or drawings)	

Country	Status	Covered in <i>DWPI</i>
	E	Granted EP in English or French with DE assigned serial number
	G	Granted EP in German with DE assigned serial number
	T	PCT transfer to DE
	T0	PCT transfer to DE published in non-German language
	T2	Translation of granted EP in English or French with DE assigned serial number
	T5	Translation of PCT international announcement
	T8	Correction of EP application (bibliographic change)
	T9	Correction of EP application (claims, description or drawings)
	U1	Utility Model (199626)
	U8	Correction of Utility Model (bibliographic change)
	U9	Correction of Utility Model (claims, description or drawings)
HUNGARY (HU)	A	Open for public inspection application
	A1	Patent application with search report
	A2	Examined patent application
	B	Granted patent with search report (from 199302)
	B1	Granted patent
	H	Open for public inspection application (from 199223)
	T	English language abstracts of Hungarian patent specifications (from 199223)
INDIA	B	Pre opposition granted applications
	I1	Pre grant (18 months) application - Delhi
	I1	Pre grant (18 months) application - Kolkata
	I3	Pre grant (18 months) application - Mumbai
	I4	Pre grant (18 months) application - Chennai
	P1	PCT application - national phase - Delhi
	P2	PCT application - national phase - Kolkata
	P3	PCT application - national phase - Mumbai
	P4	PCT application - national phase - Delhi
INTERNATIONAL TECHNOLOGY DISCLOSURES (TP)	A	Scientific literature disclosure (ceased publishing June 1994)
IRELAND (IE)	A	Patent Specification (1963-1969 only)
	B	Granted patent (from 199517)
	B3	Short patent (from 199517)
ISRAEL (IL)	A	Application of patent for invention
ITALY (IT)	A	Patent
	B	Unexamined granted patent
JAPAN (JP)	A	Open for public inspection application published before examination (Kokai)
	B	Application published after examination (Kokoku)
	B1	Registered (granted) patent not previously published at the Kokai stage (Tokkyo Koho)
	B2	Registered (granted) patent previously published at the Kokai stage (Toroku)
	W	PCT transfer originating from abroad
	X	PCT transfer originating from Japan
	Y	PCT transfer originating from abroad to Utility Model
	Z	PCT transfer originating from Japan to Utility Model
KOREA SOUTH (KR)	A	Application published before examination
	B	Examined patent application
	B1	Examination patent application (from 199252)
	B2	Examined patent application (1 st publication)
LUXEMBOURG (LU)	A	Patent granted without examination
MEXICO (MX)	A	Patent of Invention (from 199816)

Country	Status	Covered in <i>DWPI</i>
	A1	Published patent application
	A2	Anticipated publication of a patent application
	A4	Regional filing - Jalisco
	A5	Regional filing - Nuevo Leon
	A6	Regional filing - Yucatan
	A7	Regional filing - Guanajuato
	B	Granted patent (patent law 1991) from 199816
NETHERLANDS (NL)	A	Open for public inspection application which has neither been searched nor examined
	B	Examined accepted specification - application which has been searched and examined
	C2	20-year new law granted patent (from 199608)
	C6	Six-year new law petty patent (from 199608)
NEW ZEALAND (NZ)	A	Application which has been searched and examined (from 199301)
NORWAY (NO)	A	Open for public inspection application which has been neither searched nor examined
	B	Examined accepted specification - application which has been searched and examined (from 199301)
	B1	Granted patent (new law)
PCT (WO)	A	Open for public inspection application
	A1	Open for public inspection application with international search report (from 199220)
	A2	Open for public inspection application without international search report (from 199220)
	A3	Open for public inspection application search report for A2 (from 199220)
PHILIPPINES (PH)	A	Patent application (from 199511)
	B1	Granted patent (from 200267)
PORTUGAL (PT)	A	Application for patent of invention
RESEARCH DISCLOSURE (RD)	A	Scientific literature disclosure © Kenneth Mason Publications Limited [2006] www.researchdisclosure.com
ROMANIA (RO)	A	Examined accepted specification
	B	Granted patent according to 1991 law
	B1	Granted patent according to 1991 law
RUSSIAN FEDERATION (RU) (See also Soviet Union)	C	Granted patent of invention
	C1	Granted patent of invention
SINGAPORE (SG)	A	Registrations (from 199513)
	A1	Patent applications (from 199631)
SLOVAKIA (SK)	A3	Patent application according to Law 527/90
	B6	Granted application according to Law 527/90
SOUTH AFRICA (ZA)	A	Patent specification accepted without examination
	AA	Second application with same number
	AZ	Second application with same number
SOVIET UNION (SU)	A	Examined granted patent
	A1	Inventor's certificate
	A2	Addition to inventor's certificate
	A3	Patent
	A4	Patent of addition
	B	Reissued patent

Country	Status	Covered in <i>DWPI</i>
SPAIN (ES)	A	Patent granted without examination (pre-1987)
	A	Patent application published with search report
	A1	Patent application published with search report
	A2	Patent published without search report
	A6	Patent published without search report
	B	Patent published with search report
	B1	Patent published with search report
	T1	Translation of the claims with drawings of EP application
	T3	Translation of granted EP patent
	T4	Corrected translation of a granted European patent
	T5	Modified translation of a granted European patent
SWEDEN (SE)	A	Open for public inspection application which has been neither searched or examined
	B	Examined accepted specification - application has been searched and examined (from 198701)
	C2	Granted patent (new law)
SWITZERLAND (CH)	A	Granted unexamined patent or searched and examined application
	A3	Open for public inspection application which has been searched and preliminarily examined (from 1978)
	A5	Granted unexamined patent
	A8	Correction to the bibliographic data of an A level publication
	A9	Correction to the patent specification of an A level publication
	B	Examined accepted specification
	B5	Granted with examination
TAIWAN (TW)	A	Examined patent application - old law
	B1	Examined patent application - new law
UNITED KINGDOM (GB)	A	Examined granted specification (<2000000)
	A	Open for public inspection application which has been searched but not examined (2000000+)
	B	Granted patent which has been searched and examined specification (from 198206)
UNITED STATES (US)	A	Examined granted patent (until December 2000)
	A1	Open for public inspection application (from 2 nd January 2001)
	A2	Subsequent/2 nd publication of a patent application (from 2 nd January 2001)
	A9	Corrected published utility patent application
	B	Re-examination certificate (prior to 2 nd January 2001)
	B1	Re-examination certificate (prior to 2 nd January 2001)
	B1	Utility patent grant with no pre-grant publication (from 2 nd January 2001)
	B2	Re-examination certificate (prior to 2 nd January 2001)
	B2	Utility patent grant with pre-grant publication (from 2 nd January 2001)
	B3	Re-examination certificate (prior to 2 nd January 2001)
	C1	First re-examination certificate (from 2 nd January 2001)
	C2	Second re-examination certificate (from 2 nd January 2001)
	E	Reissue patent
	H	Defensive specification
	H	Statutory invention registration (replaces defensive publication)
N	NTIS-published invention application	

DWPI Country Coverage

Date of Inclusion

Country	Year	DWPI Update
Argentina (AR)	1974-1976 only	
Australia (AU)	1983 (also 1963-1969)	198310
Austria (AT)	1975	197515
Belgium (BE)	1963	
Brazil (BR)	1976	197601
Canada (CA)	1963	
China (CN)	1987	198701
Czech Republic (CZ)	1993	199319
Czechoslovakia (CS)	1975-1994	197520
Denmark (DK)	1974	197445
European Patents (EP)	1978	197849
Finland (FI)	1974	197445
France (FR)	1963	
Germany (East) (DD)	1963	
Germany (DE)	1963	
Hungary (HU)	1975	197526
India	2005	
International Technology		
Disclosures (TP)	1984-1993	198408
Ireland (IE)	1963-1969; 1995	199517
Israel (IL)	1975	197515
Italy (IT) (Subjects from Section A only)	1966-1969	
	1978	197801
Japan (JP)	1963	
Korea (KR) (South)	1986	198640
Luxembourg (LU)	1984	198443
Mexico (MX)	1998	199816
Netherlands (NL)	1963	
New Zealand (NZ)	1993	199301
Norway (NO)	1974	197448
Patent Cooperation		
Treaty (WO)	1978	197849
Philippines (PH)	1995	199511

Country	Year	DWPI Update
Portugal (PT)	1974	197452
Research Disclosure (RD)	1978	197809
© Kenneth Mason Publications Limited [2006] www.researchdisclosure.com		
Romania (RO)	1975	197532
Russian Federation (RU)	1994 (Russia)	199406
Singapore (SG)	1995	199513
Slovakia (SK)	1994	199417
South Africa (ZA)	1963	
Soviet Union (SU)	1963-1994	
Spain (ES)	1983	198334
Sweden (SE)	1974	197442
Switzerland (CH)	1963	
Taiwan (TW)	1993	199324
United Kingdom (GB)	1963	
United States (US)	1963	

Thomson Scientific Standard Abbreviations

Thomson Scientific has abbreviated many commonly occurring words in titles and abstracts (Basic Index) over time.

	Abbreviation		Abbreviation
addition(s)	addn./addns.	melting point	m.pt.
administration	admin.	minimum	min.
amount(s)	amt./amts.	mixture(s)	mixt./mixts.
apparatus	appts.	molecule(s)	mol./mols.
aqueous	aq.	obtained	obtd.
atmosphere	atmos.	optionally	opt.
boiling point	b.pt.	oxidation	oxidn.
coefficient(s)	coefft./coeffts.	particularly	partic.
composition(s)	compsn./compsns.	parts by weight	pts. wt.
compound(s)	cpd./cpds.	parts per million	ppm.
concentrated	conc.	precipitate(s)	ppte./pptes.
concentration(s)	concn./concns.	precipitated	pptd.
condensation	condensn.	precipitation	pptn.
containing	contg.	preferably	pref.
continuation	cont.	preparation	prepn.
continuation in part	c.i.p.	prepared	prepd.
corresponding	corresp.	primary	prim.
derivative(s)	deriv./derivs.	product(s)	prod./prods.
determination	determn.	production	prodn.
diameter	dia.	purification	purificn.
dilute	dil.	quaternary	quat.
distillation	distn.	reduction	redn.
divided/division	div.	saturated	satd.
divided out of	div. ex	secondary	sec.
equivalent(s)	equiv./equivs.	separated	sepd.
especially	esp.	separating	sepg.
evaporation	evapn.	separation	sepn.
extraction	extn.	solution(s)	soln./solns.
for example	e.g.	substituent(s)	substit./substits.
gram molecule(s)	mole./moles.	substituted	substd.
group(s)	gp./gps.	temperature(s)	temp./temps.
insoluble	insol.	tertiary	tert.
liquid	liq.	that is	i.e.

Abbreviation		Abbreviation	
manufacture	mfr.	volume	vol.
manufactured	mfd.	weight	wt.
manufacturing	mfg.	with respect to	w.r.t.
maximum	max.		

Other standard abbreviations for units of measurement, electrical and engineering elements, chemical groups and chemical formulae are also used in abstracts, e.g.:

- Standard abbreviations for units and quantities, e.g. mm, g, and pH, pKa, N for normality
- Well-known standard abbreviations for compounds, e.g. PVC and PTFE
- Standard abbreviations for electrical and general engineering elements and terms, e.g. FET, MOSFET, TTL, FM, AFC, TDC
- Standard abbreviations for chemical groups, e.g. Me, Et, Ph.
- Chemical formulae and standard symbols for elements, e.g. H₂SO₄, Cu, Zn
- The abbreviations wt% and vol% for percentage by weight and percentage by volume, respectively

Glossary of Patent Terminology

Application (for Patent)

Papers comprising petition, specification, drawings (when required), one or more claims, oath or declaration, and filing fee, whereby an applicant seeks a patent.

Assignee

The person(s) or corporate body to whom all or limited rights under a patent are legally transferred.

Basic Patent

The first member of a *DWPI* patent family. This is the first published patent received by Thomson Scientific and processed.

Claim(s)

The definition of the monopoly rights that the applicant is trying to obtain for the invention. The claims become the actual monopoly that is given when/if the patent is granted.

Continuation

Applicable mainly in the US, continuations are second or subsequent applications which are filed while the original parent application is pending. Continuations must claim the same invention as the original application to gain the benefit of the parent filing date.

Continuations-in-part

Generally referred to as a 'c.i.p.', this is essentially the same as the continuation with the exception that some new material may be included. The c.i.p. must be filed while the original parent application is pending for any disclosed material in common with the parent.

Defensive Publication

A publication and disclosure to the public of a pending patent application.

Division

If the patent office decides that an application covers too large an area to be considered as a single patent, then the application is split into one or more divisional applications.

Equivalent

Specifications published by different patent offices all relating to the same invention and all sharing the same priority application (See Non-Convention Equivalents).

European Patent Convention (EPC)

Thirty one European countries are parties to the European Patent Convention. A patent application filed under this convention will, when granted, usually automatically be effective in each of the countries designated by the applicant.

Filing Date

The date when the application reaches the patent office in complete form.

First to File

The applicant who is the first to file an application for an invention will be awarded the patent over all others. This is the present law in all countries other than the US.

First to Invent

In the US, the applicant who is the first to invent will be awarded the patent over all others.

Non-Convention Equivalents

An application filed in a second or subsequent country which does not claim a priority application in another country. Usually a result of filing the application after the 12-month Convention period, but may be within that period by choice of the applicant.

Novelty

The concept that the claims must be totally new. The invention must never have been made public in any way, anywhere, before the date on which the application for a patent is filed. In the US, this is determined by the date of invention.

Obviousness

The concept that the claims defining an invention in a patent application must involve an inventive step if, when compared with what is already known (i.e. prior art), it would not be obvious to someone skilled in the art.

Paris Convention

Having filed a first patent application (usually in his/her own country), the applicant is allowed one year from that date in which to make further applications in member countries and claim the original priority date.

Patent

A document defining the rights conferred by the grant, but often used generally to mean any published specification.

Patent Cooperation Treaty (PCT)

There are currently 132 contracting states to this treaty (as of August 2006). The PCT system offers an advantageous route for international patent protection with reduced costs.

Patent Family

All the equivalent patent publications corresponding to a single invention, covering different geographical regions.

Prior Art

Previously used or published technology that may be referred to in a patent application or examination report.

Priority Date

The initial date of filing of a patent application, normally in the applicant's domestic patent office. This date is used to help determine the novelty of an invention.

Publication

Documents, including patents of most countries that are printed (published) and are actually or presumptively available to the public.

Search Report

A list of published items (both patent and non-patent literature), issued by the patent examiners checking the novelty of the patent application, which are relevant to the subject of the invention.

Specification

The description, drawings and claims of an invention prepared to support a patent application. The term does not imply that the invention is necessarily new or was ever protected.

World Intellectual Property Office (WIPO)

The organization that administers the Patent Cooperation Treaty (PCT). (See Patent Cooperation Treaty)

Further Information

Customer Technical Support

Expert advice and support is available via our Customer Technical Support staff, to provide a fast and efficient response to all your enquiries. The experienced Technical Support staff has an in-depth knowledge of the products and services offered by Thomson Scientific and are familiar with the command languages of the various online hosts.

From general customer queries through to complex technical questions, the Technical Support department is there to help you.

Contact Details

Email (all regions)

Please use the Feedback Form on the following Web page:
www.scientific.thomson.com/support/techsupport

Your message will automatically be directed to your nearest Support Center.

Europe, Middle East and Africa

Thomson Scientific
77 Hatton Garden
London EC1N 8JS
United Kingdom

Phone: +44 (0)20 7433 4999

Americas

Thomson Scientific
3501 Market Street
Philadelphia, PA 19104
USA

Phone: +1 800 336 4474 ext. 1591

+1 215 386 0100

Fax: +1 215 386 6362

Japan

Thomson Corporation K.K.
Palaceside Building, 5F East
1-1-1 Hitotsubashi
Chiyoda-ku
Tokyo 100-0003

Phone: 0800 888 8855 (from Japan
only)

+81 3 5218 6500

Fax: +81 3 5218 6536

Asia Pacific (Singapore)

Thomson Scientific
16 Collyer Quay
22nd Floor
Hitachi Tower
Singapore 049318

Phone: +65 6879 4118

Fax: +65 6223 2634

China

Thomson Scientific
Room 407,
Raycom InfoTech Park Tower A
No. 2 Kexueyuan South Road
Haidian District
Beijing 100080
P.R.China

Phone: +86 10 8286 2099
Fax: +86 10 8286 2088

Korea

Thomson Scientific
13F Hungkuk Life Insurance Bldg.
226 Shinmunro 1-ga, Jongro-gu
Seoul 110-786
Korea

Phone: 080 010 8100
+82 2 2076 8100
Fax: +82 2 2076 8122

Australia and New Zealand

Thomson Scientific
Level 5
1000 Harris Street
Pyrmont, NSW 2009
Australia

Phone: Australia 1800 007 214
New Zealand 0800 443 162
Fax: +65 6223 2634

Thomson Scientific Website

The Thomson Scientific website (www.scientific.thomson.com) provides comprehensive reference material for patent information searchers, and is updated daily with product and patent news. The website includes searchable databases for the Patentee and Manual codes, and hundreds of downloadable product samples and user guides. You can also reserve your place on our product training classes, check dispatch details for our printed and CD-ROM products, and monitor country coverage and latest update information for the *Derwent World Patents Index*. Visitors can also sign up to receive a monthly email which highlights new additions to the website.

Customer Support Center

Optimize your use of Thomson Scientific products and services. In our comprehensive Support Center you are just a click away from the reference materials you need.
www.scientific.thomson.com/support

Customer Training

Thomson Scientific provides a selection of face-to-face and web-based training for both novice and advanced users of our databases. Our expert trainers can help you get more from your information resources.

Patent Copy Service

Having completed your search you can order quality copies of patent documents issued around the globe. As holders of the world's largest private collection of international patents, Thomson Scientific provides a fast and efficient service. In addition, through a global network of contacts, Thomson Scientific regularly locates and supplies old and unusual patents.

The complete file history of a patent can also be supplied. This detailed document enables you to track the entire life of a patent from application through amendments to grant (if this occurred). All this information is presented neatly tabbed and bound.

To make use of these services, simply contact your local Thomson Scientific Support Center.

User Guides

To help you search *Derwent World Patents Index* more effectively, Thomson Scientific provides a comprehensive range of user guides, all written by specialists in their field. The user guides listed below include topics relevant to searching the database. The majority of these are available as PDF files on our web site at www.scientific.thomson.com/support/userguides/

User Guide

Global Patent Sources

Guide to Patent Expiries

Title Terms

DWPI Classification

Patentee Codes

CPI Manual Codes

EPI Manual Codes

CPI Chemical Indexing User Guide

CPI Chemical Indexing Guidelines

Chemistry Resource on STN

CPI Plasdac Coding Systems

Polymer Indexing Dictionary

Polymer Indexing Reference Manual

Polymer Indexing System Description

Polymer Indexing Thesaurus

Polymer Indexing Hierarchy

Useful Additional Websites

- www.uspto.gov US Patent Office website
- www.european-patent-office.org European Patent Office Web site
- www.jpo.go.jp Japanese Patent Office Web site
- www.wipo.int World Intellectual Property Office Web site
- www.wipo.int/classifications/ipc/en International Patent classification (IPC)

Did you know that you can now access *DWPI* via the internet?

DWPI on Dialog can be searched on the following web interfaces:

www.dialogweb.com

www.dialogclassic.com

Other Thomson Scientific databases available on Dialog

The following additional Thomson Scientific databases are available for searching on Dialog:

- BIOSIS Previews (5; 55)
- Biosis Toxicology (157)
- *Chemistry Resource* (355)
- *Current Contents Search* (440)
- *Derwent Biotechnology Abstracts* (357)
- *Derwent Drug File* (376-377; 912-913)
- *Derwent World Patents Index First View*SM (331)
- *Index Chemicus*[®] (302)
- *International Pharmaceutical Abstracts (IPA)* (74)
- *LitAlert*[®] (670)
- *Patents Citation Index*TM (342)
- *Science Citation Index*[®] (*SciSearch*[®]) (34, 434)

For more information on these Thomson Scientific databases, visit

www.scientific.thomson.com.

